

2020



WORLDWIDE LEADER OF BACKGROUNDS AND PHOTOGRAPHIC PRODUCTS

SAVAGEUNIVERSAL.COM



SAVAGE SINCE 1937.

We're celebrating 83 years in business! We're proud to continue to be the worldwide leader of professional background paper and continuously build our studio backdrop, LED lighting, grip gear and photographic accessory solutions for amateur and pro users alike.



DID YOU KNOW?

Our Project Pet Portraits gives back to photographers in the US who donate their professional services to local animal shelter organizations. Learn more at SavageUniversal.com/Getting-Involved.



FOLLOW US ON SOCIAL MEDIA!

Get set tips, discover new gear & find inspiration for your next photo shoot!



I N D E X

PHOTOGRAPHY BACKGROUNDS	4
SEAMLESS BACKGROUND PAPER	6
VINYL BACKGROUNDS	10
CANVAS BACKGROUNDS	12
COLLAPSIBLE BACKGROUNDS	14
FABRIC BACKGROUNDS	16
PRINTED BACKGROUND PAPER	21
TRANSLUM™	22
GREEN SCREENS & DIGITAL KITS	23
LED LIGHTING	24
STUDIO EQUIPMENT	36
LIGHT STANDS	38
GRIP GEAR	42
LIGHT MODIFIERS	48
BACKGROUND STANDS	52
STUDIO ACCESSORIES	54
PRODUCT PHOTOGRAPHY	56
STORAGE SOLUTIONS	57
MAT & MOUNT BOARD	58

PHOTO CREDITS

INSIDE COVER: VALERIE BRUDER – GULF BLUE SEAMLESS PAPER PAGE 5: ELAINE TORRES – PRIMARY RED, FLAMINGO, ORANGE SEAMLESS PAPER PAGE 6: ELAINE TORRES – TEAL, MINT GREEN, GULF BLUE, ULTRAMARINE SEAMLESS PAPER
PAGE 7: RYAN WALSH – CORAL SEAMLESS PAPER | JENNIFER SCHOENEGGE – ORCHID SEAMLESS PAPER PAGE 13: YEVGENIY ZAKHARKIN – ALPINE CANVAS | ROBERT SILVER – SCARLET CANVAS PAGE 16: RYAN WALSH – POWDER BLUE POLYESTER
PAGE 18: SYDNEY WALTON – BLACK BACKDROP TRAVEL KIT (FLOOR EXTENDED) PAGE 20: MIKE MCGEE – VERONA HAND PAINTED MUSLIN, SEDONA RED CRUSHED MUSLIN | ALBA SOLER – DARK GRAY WASHED MUSLIN PAGE 21: RYAN WALSH – WEATHERED BRICK, DEEP
BLUE HAZE BACKGROUND PAPER PAGE 22: ROBERT LOPSHIRE – TRANSLUM PAGE 24: BRYAN BOSGAL – RGB RAINBOW RINGLIGHT PAGE 30: RYAN WALSH – EDGE LIGHT PRO LED LIGHT KIT, BABY BLUE SEAMLESS PAPER PAGE 32: BRYAN BOSGAL – RGB LIGHT PAINTER
PRO LED WAND PAGE 36: CUSI TAYLOR – THUNDER GRAY SEAMLESS PAPER, MODMASTER ADAPTABLE SPEEDLIGHT SOFTBOX PAGE 40: BRYAN BOSGAL – MULTIFLEX LIGHT STAND PAGE 50: RYAN WALSH – STUDIO BLUE SEAMLESS PAPER, TRANSPARENT UMBRELLA

Every reasonable effort was made to ensure the accuracy of the information provided in this catalog. However, Savage Universal reserves the right to change product information and specs at any time without notice, and makes no warranties as to the accuracy of the information printed.

PHOTOGRAPHY BACKGROUNDS

We offer a product range that's unsurpassed for its selection, quality and value. From smooth seamless paper in every color under the sun to hand painted canvas that delivers a custom look with every piece, we make the products that photographers rely on for creating perfect backgrounds for virtually every project. Just starting out and need a flexible solution for a small home studio? We have pop-open backgrounds that fold away compactly. Upgrading your high traffic commercial studio and looking for the most professional backdrop set? We have heavy-duty, durable vinyl that will stand the test of time.

Plain, printed, patterned or painted, you'll find it with Savage!

#SHOOTWITHSAVAGE



SEAMLESS BACKGROUND PAPER

Savage Widetone Seamless Background Paper has been the professional photographer's top choice for creating smooth, quality backgrounds for many decades. Its high quality, fine-tooth, non-reflective surface makes it ideal for photo and video backgrounds, retail displays, crafting and theater productions.

FEATURES:

- Fine-tooth, non-reflective surface
- Cost-effective background solution
- 65 Vibrant colors
- Acid-free and core-wound for longevity
- Paper density: 145 – 180 GSM
- Interior core diameter: 2.125" (5.4cm)
2.63" (6.7cm) for 140" x 35yds size
- 100% Recyclable
- Made in USA

#STYLEYOURSEAMLESS

SEAMLESS BACKGROUND PAPER



WIDE TONE

1 SUPER WHITE	26" x 12 yds (66cm x 11m)	53" x 12 yds (1.35m x 11m)	86" x 12 yds (2.18m x 11m)	107" x 12 yds (2.72m x 11m)	107" x 50 yds (2.72m x 45.7m)	EXTRA WIDE
2 SKY BLUE	1-2612	1-1253	1-86	1-12	1-50	1-140
3 CORAL	2-2612	2-1253	2-86	2-12	2-50	
4 SAND	3-2612	3-1253	3-86	3-12	3-50	
5 ULTRAMARINE	4-2612	4-1253	4-86	4-12	4-50	
6 CRIMSON	5-2612	5-1253	5-86	5-12	5-50	
8 PRIMARY RED	6-2612	6-1253	6-86	6-12	6-50	
9 STONE GRAY	8-2612	8-1253	8-86	8-12	8-50	
12 STUDIO GRAY	9-2612	9-1253	9-86	9-12	9-50	
14 GRAY SKY	12-2612	12-1253	12-86	12-12	12-50	
15 SUEDE GRAY	14-2612	14-1253	14-86	14-12	14-50	
16 CHESTNUT	15-2612	15-1253	15-86	15-12	15-50	
18 EVERGREEN	16-2612	16-1253	16-86	16-12	16-50	
19 EGG NOG	18-2612	18-1253	18-86	18-12	18-50	
20 BLACK	19-2612	19-1253	19-86	19-12	19-50	
22 EGG SHELL	20-2612	20-1253	20-86	20-12	20-50	20-140
24 ORANGE	22-2612	22-1253	22-86	22-12	22-50	
25 BEIGE	24-2612	24-1253	24-86	24-12	24-50	
26 SLATE GRAY	25-2612	25-1253	25-86	25-12	25-50	
27 THUNDER GRAY	26-2612	26-1253	26-86	26-12	26-50	
29 ORCHID	27-2612	27-1253	27-86	27-12	27-50	
30 GULF BLUE	29-2612	29-1253	29-86	29-12	29-50	
31 BLUE JAY	30-2612	30-1253	30-86	30-12	30-50	
32 LIGHT GRAY	31-2612	31-1253	31-86	31-12	31-50	
34 OLIVE GREEN	32-2612	32-1253	32-86	32-12	32-50	
35 HOLLY	34-2612	34-1253	34-86	34-12	34-50	
36 OCEAN BLUE	35-2612	35-1253	35-86	35-12	35-50	
37 TULIP	36-2612	36-1253	36-86	36-12	36-50	
38 CANARY	37-2612	37-1253	37-86	37-12	37-50	
40 MINT GREEN	38-2612	38-1253	38-86	38-12	38-50	
41 BLUEMIST	40-2612	40-1253	40-86	40-12	40-50	
43 MARMALADE	41-2612	41-1253	41-86	41-12	41-50	
46 TECH GREEN	43-2612	43-1253	43-86	43-12	43-50	46-140
47 BABY BLUE	46-2612	46-1253	46-86	46-12	46-50	
50 WHITE	47-2612	47-1253	47-86	47-12	47-50	
51 BONE	50-2612	50-1253	50-86	50-12	50-50	
53 PECAN	51-2612	51-1253	51-86	51-12	51-50	
54 CHARCOAL	53-2612	53-1253	53-86	53-12	53-50	
56 FASHION GRAY	54-2612	54-1253	54-86	54-12	54-50	
57 GRAY TINT	56-2612	56-1253	56-86	56-12	56-50	
58 STUDIO BLUE	57-2612	57-1253	57-86	57-12	57-50	
60 FOCUS GRAY	58-2612	58-1253	58-86	58-12	58-50	
61 TV GRAY	60-2612	60-1253	60-86	60-12	60-50	
62 PURPLE	61-2612	61-1253	61-86	61-12	61-50	
63 IVORY	62-2612	62-1253	62-86	62-12	62-50	
64 BLUE JEAN	63-2612	63-1253	63-86	63-12	63-50	
65 REGAL BLUE	64-2612	64-1253	64-86	64-12	64-50	
66 PURE WHITE	65-2612	65-1253	65-86	65-12	65-50	
67 RUBY	66-2612	66-1253	66-86	66-12	66-50	
68 TEAL	67-2612	67-1253	67-86	67-12	67-50	
70 STORM GRAY	68-2612	68-1253	68-86	68-12	68-50	
71 DEEP YELLOW	70-2612	70-1253	70-86	70-12	70-50	70-140
74 SMOKE GRAY	71-2612	71-1253	71-86	71-12	71-50	
75 TRUE BLUE	74-2612	74-1253	74-86	74-12	74-50	
76 MOCHA	75-2612	75-1253	75-86	75-12	75-50	
79 ALMOND	76-2612	76-1253	76-86	76-12	76-50	
80 COCOA	79-2612	79-1253	79-86	79-12	79-50	
81 RUSTIC	80-2612	80-1253	80-86	80-12	80-50	
82 TANGELO	81-2612	81-1253	81-86	81-12	81-50	
83 TURQUOISE	82-2612	82-1253	82-86	82-12	82-50	
84 DOVE GRAY	83-2612	83-1253	83-86	83-12	83-50	
90 SOFT GRAY	84-2612	84-1253	84-86	84-12	84-50	
91 PLUM	90-2612	90-12 53	90-86	90-12	90-50	
92 FLAMINGO	91-2612	91-1253	91-86	91-12	91-50	
93 LEMONADE	92-2612	92-1253	92-86	92-12	92-50	
	93-2612	93-1253	93-86	93-12	93-50	

SEAMLESS BACKGROUND PAPER COLOR CHART

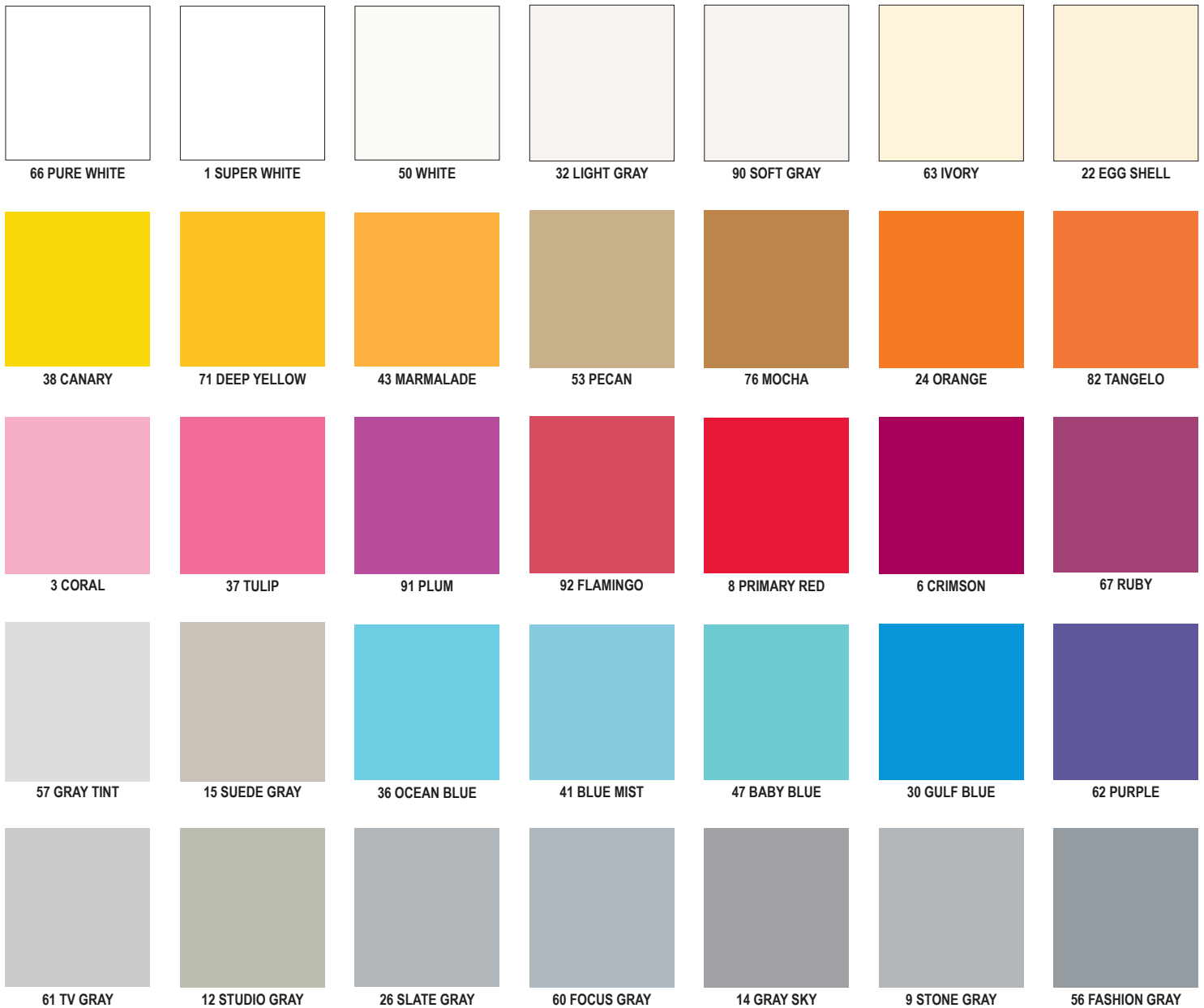
CC-WIDETONE65



FIND VIDEO TUTORIALS ON THESE PRODUCTS ON OUR WEBSITE & BLOG

SEAMLESS BACKGROUND PAPER

Savage paper is available in five sizes: 26" x 12yds, 53" x 12yds, 86" x 12yds, 107" x 12yds and 107" x 50yds. Super White, Black, Storm Gray and Tech Green are also available in 140" x 35yds.



Although every effort was made to ensure accurate color reproduction, some variation may occur.

For more accurate color reproduction, order a Savage Seamless Background Paper Color Swatch Chart from your local dealer or at SavageUniversal.com.



We are committed to producing products that are eco-friendly and safe for the environment. Our paper products utilize on average 75% recycled fiber.



SEAMLESS BACKGROUND PAPER ACCESSORIES AND STORAGE SOLUTIONS ON PAGE 54 & 57.



Infinity

Vinyl by Savage

Savage Infinity Vinyl Backgrounds provide an ultra-smooth background and have a unique matte finish that eliminates glare. These strong, durable backdrops work well with high-key lighting, making them an ideal choice for dramatic portrait and commercial photography. Vinyl stands up extremely well to wear, resists scuffs and is easy to clean.

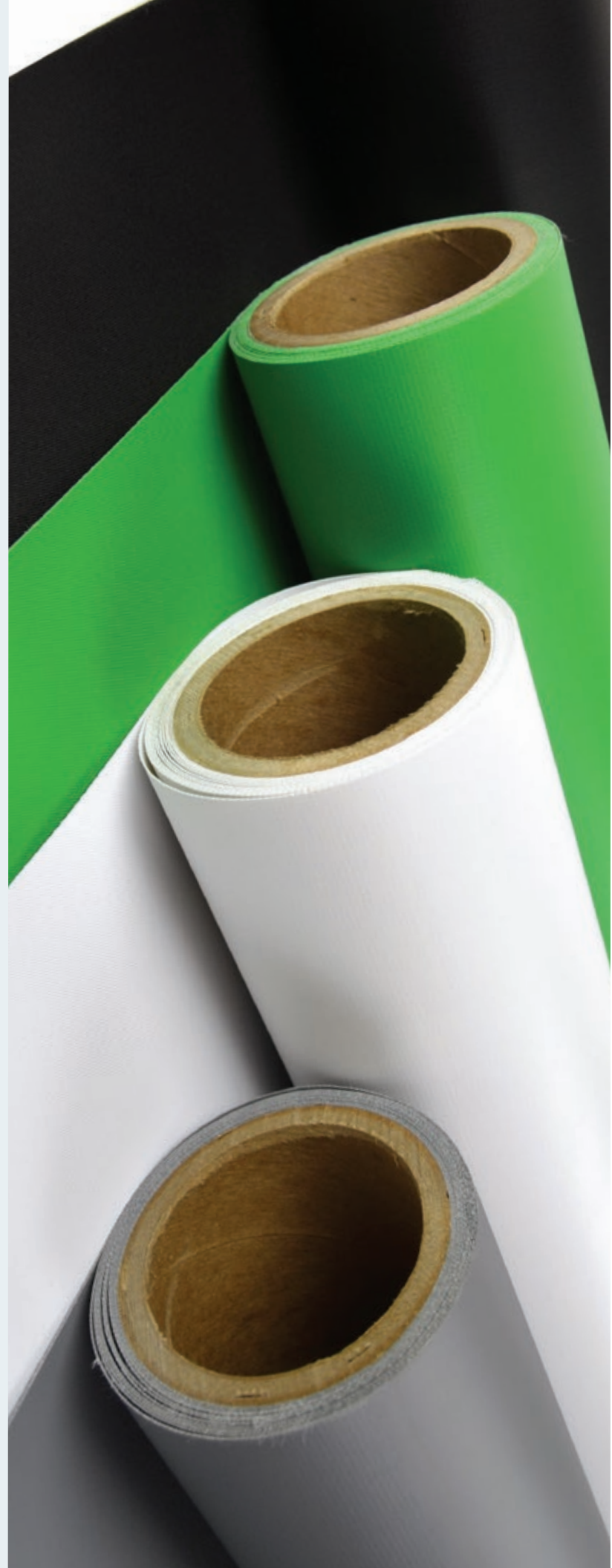
Our Infinity Vinyl Backgrounds come rolled on heavy-duty cardboard cores to prevent wrinkles. They can also be used with most standard background support systems and are also available with their own stands.

FEATURES:

- Matte finish - no glare
- Professional quality, durable vinyl
- Easily clean soil marks with a damp sponge
- Ideal for high key photography (white)
- Rolls are on sturdy cores to prevent wrinkles

TIP:

*Working with pets or messy products?
Vinyl is cleanable and durable!*



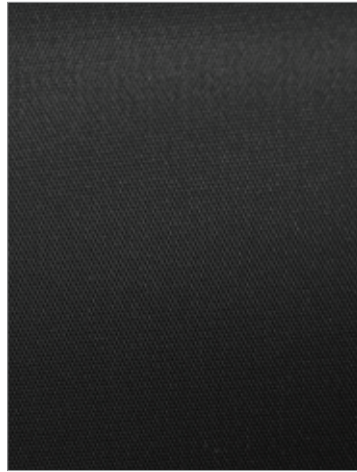
VINYL BACKGROUNDS

SOLID COLORED VINYL BACKGROUNDS



PURE WHITE

5' x 7' (1.52m x 2.13m) **V01-0507**
 5' x 12' (1.52m x 3.65m) **V01-0512**
 8' x 10' (2.43m x 3.04m) **V01-0810**
 8' x 20' (2.43m x 6.09m) **V01-0820**
 9' x 10' (2.75m x 3.04m) **V01-0910**
 9' x 20' (2.75m x 6.09m) **V01-0920**
 10' x 10' (3.04m x 3.04m) **V01-1010**
 10' x 20' (3.04m x 6.09m) **V01-1020**



MATTE BLACK

5' x 7' (1.52m x 2.13m) **V20-0507**
 5' x 12' (1.52m x 3.65m) **V20-0512**
 8' x 10' (2.43m x 3.04m) **V20-0810**
 8' x 20' (2.43m x 6.09m) **V20-0820**
 9' x 10' (2.75m x 3.04m) **V20-0910**
 9' x 20' (2.75m x 6.09m) **V20-0920**
 10' x 10' (3.04m x 3.04m) **V20-1010**
 10' x 20' (3.04m x 6.09m) **V20-1020**



CHROMA GREEN

5' x 7' (1.52m x 2.13m) **V46-0507**
 5' x 12' (1.52m x 3.65m) **V46-0512**
 8' x 10' (2.43m x 3.04m) **V46-0810**
 8' x 20' (2.43m x 6.09m) **V46-0820**
 9' x 10' (2.75m x 3.04m) **V46-0910**
 9' x 20' (2.75m x 6.09m) **V46-0920**
 10' x 10' (3.04m x 3.04m) **V46-1010**
 10' x 20' (3.04m x 6.09m) **V46-1020**



PHOTO GRAY

5' x 7' (1.52m x 2.13m) **V70-0507**
 5' x 12' (1.52m x 3.65m) **V70-0512**
 8' x 10' (2.43m x 3.04m) **V70-0810**
 8' x 20' (2.43m x 6.09m) **V70-0820**
 9' x 10' (2.75m x 3.04m) **V70-0910**
 9' x 20' (2.75m x 6.09m) **V70-0920**
 10' x 10' (3.04m x 3.04m) **V70-1010**
 10' x 20' (3.04m x 6.09m) **V70-1020**

VINYL KITS

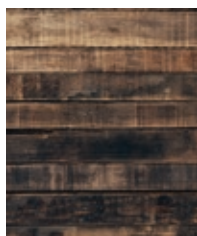
INCLUDE PORT-A-STAND AND 5' x 12' VINYL

WHITE VINYL KIT 62037-0512
 BLACK VINYL KIT 62037-2012
 GREEN VINYL KIT 62037-4612
 GRAY VINYL KIT 62037-7012

LEARN ABOUT OUR ALUMINUM CORE FOR SAVAGE INFINITY SOLID VINYL BACKGROUNDS ON PG 55

PRINTED VINYL BACKGROUNDS

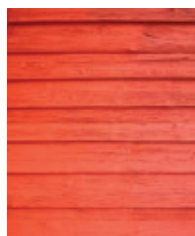
Savage Printed Vinyl Backgrounds are great for creative photographers who enjoy experimenting with new background styles and textures for trendy senior portrait sessions, fashion photography and other projects that call for an interesting and unique photo set. Available in 115 designs, these durable, glare-free backgrounds are sized to 5' x 7' (1.52m x 2.13m) and corewound for longevity.



WORN WOOD
P-VL700



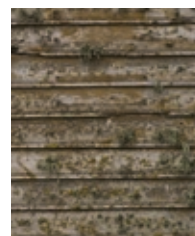
WORN WHITE WOOD
P-VL702



RED BARN WALL
P-VL704



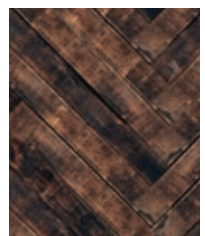
RUSTIC TEAL WOOD
P-VL706



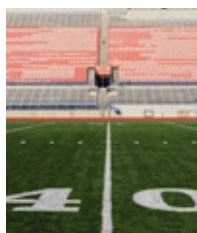
DISTRESSED WOOD
P-VL708



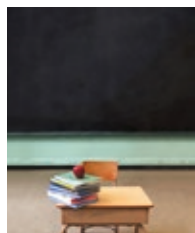
WHITE BRICK
P-VL722



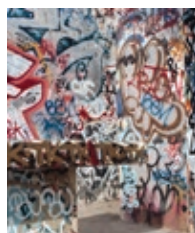
HERRINGBONE
P-VL726



FOOTBALL FIELD
P-VL928



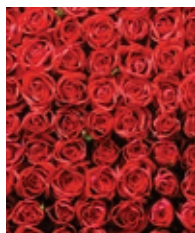
SCHOOL DESK
P-VL892



GRAFFITI ALLEY
P-VL882



WHITE WALKWAY
P-VL932



ROMANTIC ROSES
P-VL792



COZY FIREPLACE
P-VL764



ITALIAN DOORWAY
P-VL910

VIEW ALL 100+ PRINTED VINYL DESIGNS AT SAVAGEUNIVERSAL.COM

Timeless Textures

CANVAS BACKGROUNDS

A unique collection of hand-painted canvas backgrounds for fine-art photographers.

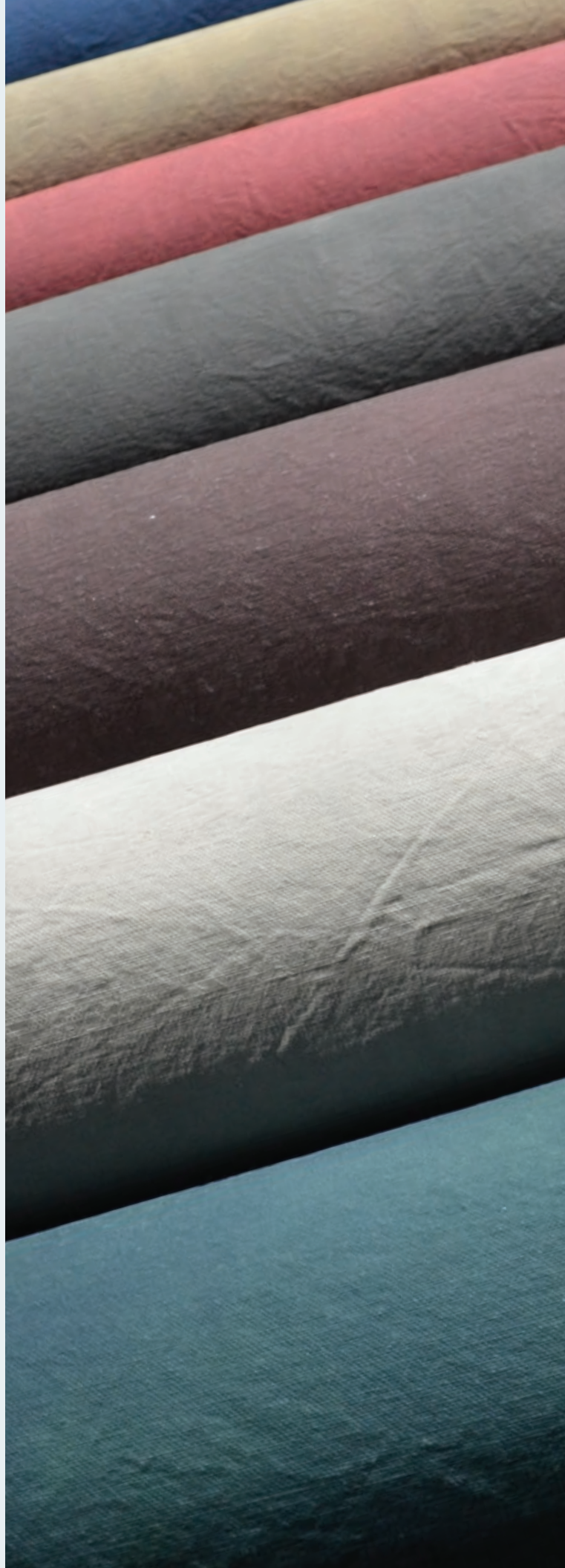
Durable and thick canvas is hand-painted in various deep, rich hues for a totally timeless, artfully textured photo background that is ideal for creating elegant and fine-art portraiture.

The hand-painting process offers a one-of-a-kind design from piece to piece where photographers can create a high quality, custom styled set at a very affordable price.

FEATURES:

- Sized to 5'x7' and 8'x12'
(1.52m x 2.13m and 2.44m x 3.66m)
- Heavy cotton canvas
- Mounted to a heavy-duty aluminum core for easy hanging from a crossbar support system
- Steam from the backside to eliminate wrinkles
- Velcro straps for secure storage/transportation

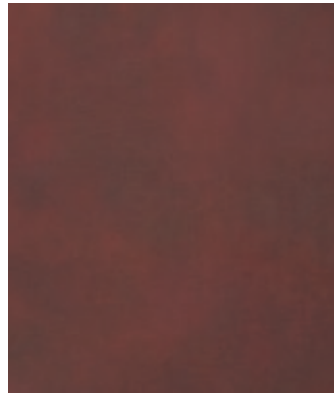
#SHOOTWITHSAVAGE



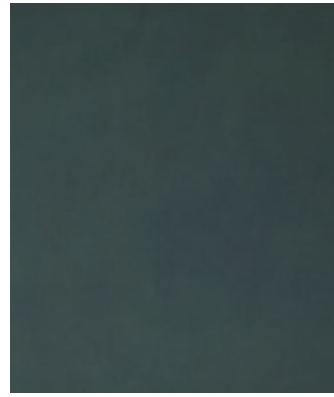
CANVAS BACKGROUNDS



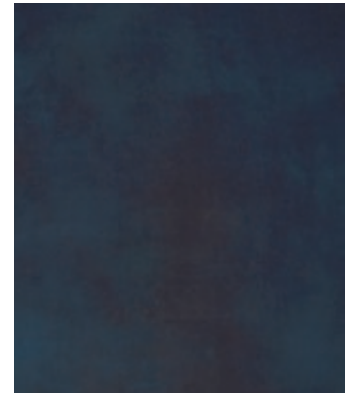
MARSALA
 5' x 7' (1.52m x 2.13m) CP500-0507
 8' x 12' (2.44m x 3.66m) CP500-0812



SCARLET
 5' x 7' (1.52m x 2.13m) CP502-0507
 8' x 12' (2.44m x 3.66m) CP502-0812



ALPINE
 5' x 7' (1.52m x 2.13m) CP504-0507
 8' x 12' (2.44m x 3.66m) CP504-0812



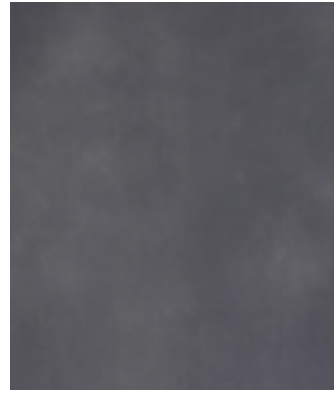
MIDNIGHT
 5' x 7' (1.52m x 2.13m) CP506-0507
 8' x 12' (2.44m x 3.66m) CP506-0812



ASH
 5' x 7' (1.52m x 2.13m) CP508-0507
 8' x 12' (2.44m x 3.66m) CP508-0812



DESERT
 5' x 7' (1.52m x 2.13m) CP510-0507
 8' x 12' (2.44m x 3.66m) CP510-0812



ECLIPSE
 5' x 7' (1.52m x 2.13m) CP512-0507
 8' x 12' (2.44m x 3.66m) CP512-0812



ALUMINUM CORE
 PREVENTS SAGGING



ALPINE PAINTED CANVAS



SCARLET PAINTED CANVAS

COLLAPSIBLE BACKGROUNDS

Portable, compact, and simple to set up and take down, Savage Collapsible Backgrounds are an ideal choice for photographers looking for a versatile backdrop that easily makes the transition from studio to location.

Our collapsible backgrounds spring open, attach to stands with a support clip, and many can be used horizontally or vertically. They collapse to 1/3 their original size for quick and easy transport in a zippered carry bag.

Also available as a collapsible background kit, including an 8' (2.4m) background stand and support clip.

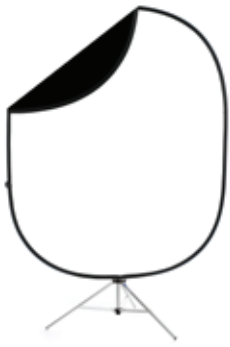
FEATURES:

- Reversible - two backgrounds in one
- Easy setup & take down
- Velcro loops allow for vertical or horizontal use
- 100% Cotton
- Carry bag included
- Kit option includes 8' (2.4m) aluminum stand & support clip
- 5' x 6' Collapses to just 26" (66cm)
- 5' x 7' Collapses to just 28" (71cm)
- 6' x 7' Collapses to just 32" (81cm)

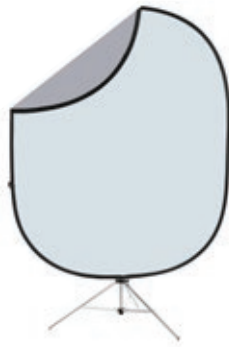
TIP:

Shoot portraits with a lower aperture to give the mottled backgrounds a soft, blended look.

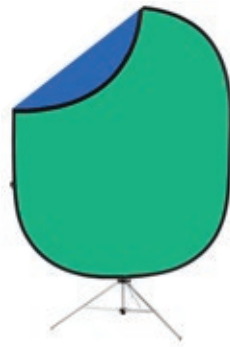




BLACK / WHITE
 5' x 6' KIT WITH STAND CB112-KIT
 5' x 6' (1.52m x 1.83m) CB112
 6' x 7' KIT WITH STAND CB112-67-KIT
 6' x 7' (1.83m x 2.13m) CB112-67



DARK / LIGHT GRAY
 5' x 6' KIT WITH STAND CB114-KIT
 5' x 6' (1.52m x 1.83m) CB114
 6' x 7' KIT WITH STAND CB114-67-KIT
 6' x 7' (1.83m x 2.13m) CB114-67



CHROMA GREEN / BLUE
 5' x 6' KIT WITH STAND CB116-KIT
 5' x 6' (1.52m x 1.83m) CB116
 6' x 7' KIT WITH STAND CB116-67-KIT
 6' x 7' (1.83m x 2.13m) CB116-67



ROYAL TONE
 5' x 6' KIT WITH STAND CB100-KIT
 5' x 6' (1.52m x 1.83m) CB100



LAKESIDE
 5' x 6' KIT WITH STAND CB102-KIT
 5' x 6' (1.52m x 1.83m) CB102



MONSOON
 5' x 6' KIT WITH STAND CB104-KIT
 5' x 6' (1.52m x 1.83m) CB104



INDIGO NIGHTS
 5' x 6' KIT WITH STAND CB106-KIT
 5' x 6' (1.52m x 1.83m) CB106



SPRING ESSENCE
 5' x 6' KIT WITH STAND CB108-KIT
 5' x 6' (1.52m x 1.83m) CB108



EARTH TONE
 5' x 6' KIT WITH STAND CB110-KIT
 5' x 6' (1.52m x 1.83m) CB110



WHITE BRICK / MOTTLED DK GRAY
 5' x 7' KIT WITH STAND CB180-KIT
 5' x 7' (1.52m x 2.13m) CB180



DARK PLANKS / MOTTLED LT GRAY
 5' x 7' KIT WITH STAND CB182-KIT
 5' x 7' (1.52m x 2.13m) CB182



GRUNGE BRICK / MOTTLED PURPLE
 5' x 7' KIT WITH STAND CB192-KIT
 5' x 7' (1.52m x 2.13m) CB192



WEATHERED BRICK / MOTTLED BLK
 5' x 7' KIT WITH STAND CB184-KIT
 5' x 7' (1.52m x 2.13m) CB184



RUSTIC PLANKS / MOTTLED RED
 5' x 7' KIT WITH STAND CB188-KIT
 5' x 7' (1.52m x 2.13m) CB188



GRAY PINE / MOTTLED BLUE
 5' x 7' KIT WITH STAND CB186-KIT
 5' x 7' (1.52m x 2.13m) CB186



INDUSTRIAL GRUNGE / MOTTLED BROWN
 5' x 7' KIT WITH STAND CB190-KIT
 5' x 7' (1.52m x 2.13m) CB190

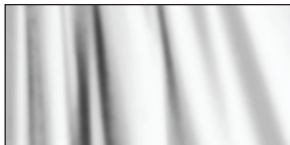


FABRIC BACKGROUNDS

Available in a wide range of colors, cloth materials and sizes, our fabric backgrounds are handy for traveling photographers who require lightweight gear they can toss in compact carry bags and go. Many of our fabric backdrops are wrinkle-resistant, making set up and prep time for a photo shoot easier and quicker.

SOLID MUSLIN BACKGROUNDS

Savage Solid Muslin Backgrounds are perfect for dramatic studio portraits and groups. Made with high-quality cotton to ensure that you get the most professional and durable background. Folds down and stores compactly.



HEAVY WEIGHT

PRO WHITE MUSLIN

10' x 10' (3.04m x 3.04m) CL01-1010
10' x 20' (3.04m x 6.09m) CL01-1020

PRO BLACK MUSLIN

10' x 10' (3.04m x 3.04m) CL20-1010
10' x 20' (3.04m x 6.09m) CL20-1020

PRO CHROMA GREEN MUSLIN

10' x 10' (3.04m x 3.04m) CL46-1010
10' x 20' (3.04m x 6.09m) CL46-1020

PRO GRAY MUSLIN

10' x 10' (3.04m x 3.04m) CL12-1010
10' x 20' (3.04m x 6.09m) CL12-1020

STANDARD WEIGHT

SOLID WHITE MUSLIN

10' x 12' (3.04m x 3.65m) SD0112
10' x 24' (3.04m x 7.31m) SD0124

SOLID BLACK MUSLIN

10' x 12' (3.04m x 3.65m) SD2012
10' x 24' (3.04m x 7.31m) SD2024

SOLID CHROMA GREEN MUSLIN

10' x 12' (3.04m x 3.65m) SD4612
10' x 24' (3.04m x 7.31m) SD4624

SOLID GRAY MUSLIN

10' x 12' (3.04m x 3.65m) SD1212
10' x 24' (3.04m x 7.31m) SD1224

SOLID MUSLIN BACKGROUND KITS

Savage Standard Weight Solid Muslin Background Kits include a variety of classic background color and size options and the Savage Port-a-Stand (pg. 52) for added versatility and mobility. This three piece stand is ideal for supporting up to any 10' (3.04m) background on location.



WHITE KIT

10' x 12' (3.04m x 3.65m) 01PAS-12
10' x 24' (3.04m x 7.31m) 01PAS-24

GREEN KIT

10' x 12' (3.04m x 3.65m) 46PAS-12
10' x 24' (3.04m x 7.31m) 46PAS-24

BLACK / WHITE KIT

10' x 12' (3.04m x 3.65m) 0120PAS-12
10' x 24' (3.04m x 7.31m) 0120PAS-24

BLACK / WHITE / GREEN KIT

10' x 12' (3.04m x 3.65m) 012046PAS-12
10' x 24' (3.04m x 7.31m) 012046PAS-24

BLACK KIT

10' x 12' (3.04m x 3.65m) 20PAS-12
10' x 24' (3.04m x 7.31m) 20PAS-24

GRAY KIT

10' x 12' (3.04m x 3.65m) 12PAS-12
10' x 24' (3.04m x 7.31m) 12PAS-24

BLACK / WHITE / GRAY KIT

10' x 12' (3.04m x 3.65m) 011220PAS-12
10' x 24' (3.04m x 7.31m) 011220PAS-24



WRINKLE-RESISTANT POLYESTER BACKGROUNDS

Ideal for students, part-time photographers, or anyone needing a durable, easy-to-use background setup that's budget friendly too. Savage 5' x 9' Polyester Wrinkle-Resistant Backgrounds are offered in a variety of vivid and eye-catching colors, and have sewn-in rod pockets for quick and easy hanging.



WRINKLE-RESISTANT SOLID ECONOMY BACKGROUND KITS

These Economy Background Kits feature 1, 2 or 3 wrinkle-resistant, polyester backgrounds sized to 5' x 9' (1.52m x 2.74m), and a portable, Economy Background stand with carry bag (pg. 52) for easy set up & mobility. Stand features quality spring clamps for simple raising & lowering of the backdrop crossbar.





NEW

**B A C K D R O P
T R A V E L K I T S**

F A B R I C B A C K G R O U N D S

BACKDROP TRAVEL KITS

Photographers capturing high-volume portraits at events or on-location need a lightweight, portable background system that will deliver a flawless look in any corner. Savage's Backdrop Travel Kits are just the solution! A one-piece stand folds out quickly with just a few adjustments and its star-shaped design pulls the wrinkle-resistant polyester backdrop taut for a smooth finish.

BACKDROP:

- 100% Plush polyester material provides opaque background
- Non-reflective, glare-free
- Sewn edges
- Includes 3" rod pocket along top edge to hang on any stand
- Includes metal grommets along top and bottom for hanging from the Savage Backdrop Travel Kit stand
- 5' x 7' (1.52m x 2.13m) size is great for headshots or 3/4 body shots
- 5' x 12' (1.52m x 3.66m) size extends onto the floor for full body portraits



UNFOLDS & ASSEMBLES QUICKLY

STAND FEATURES:

- Aluminum construction
- One-piece design
- Extends to 7' tall (2.13m)
- Includes sand bag hanging hook for extra support (sand bag not included)
- 70" Deep footprint
- Star-shaped arm design pulls backdrop taut to eliminate wrinkles



EASILY HANG BACKDROP



5' X 7' BLACK BACKDROP TRAVEL KIT
5' x 7' (1.52m x 2.13m) KIT WITH STAND BT2057-KIT
5' x 7' (1.52m x 2.13m) BACKDROP ONLY BT2057



5' X 7' WHITE BACKDROP TRAVEL KIT
5' x 7' (1.52m x 2.13m) KIT WITH STAND BT0157-KIT
5' x 7' (1.52m x 2.13m) BACKDROP ONLY BT0157



5' X 7' GRAY BACKDROP TRAVEL KIT
5' x 7' (1.52m x 2.13m) KIT WITH STAND BT7057-KIT
5' x 7' (1.52m x 2.13m) BACKDROP ONLY BT7057



5' X 7' GREEN BACKDROP TRAVEL KIT
5' x 7' (1.52m x 2.13m) KIT WITH STAND BT4657-KIT
5' x 7' (1.52m x 2.13m) BACKDROP ONLY BT4657



5' X 12' BLACK BACKDROP TRAVEL KIT
5' x 12' (1.52m x 2.13m) KIT WITH STAND BT20512-KIT
5' x 12' (1.52m x 3.66m) BACKDROP ONLY BT20512



5' X 12' WHITE BACKDROP TRAVEL KIT
5' x 12' (1.52m x 2.13m) KIT WITH STAND BT01512-KIT
5' x 12' (1.52m x 3.66m) BACKDROP ONLY BT01512

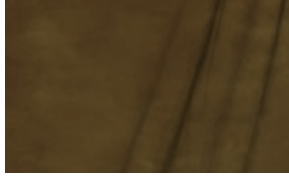
FABRIC BACKGROUNDS

HAND PAINTED MUSLIN BACKGROUNDS

Infinity Hand-Painted Muslin Backgrounds are painted with a multi-layered process to provide a unique, rich look with Old World style. Kit includes Port-a-Stand.
 • Heavy-duty 100% cotton • Seamless, made from one piece of material • 3" Rod pocket for quick hanging • Carry bag included • Glare-free, matte finish



OLYMPIA
 10' x 10' (3.04m x 3.04m) 406004-1010
 10' x 20' (3.04m x 6.09m) 406004-1020
 KIT 62037-0420



VERONA
 10' x 10' (3.04m x 3.04m) 406018-1010
 10' x 20' (3.04m x 6.09m) 406018-1020
 KIT 62037-1820



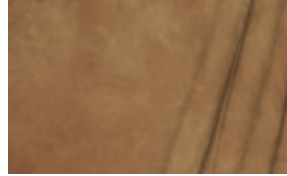
BOGATA
 10' x 10' (3.04m x 3.04m) 406024-1010
 10' x 20' (3.04m x 6.09m) 406024-1020
 KIT 62037-2420



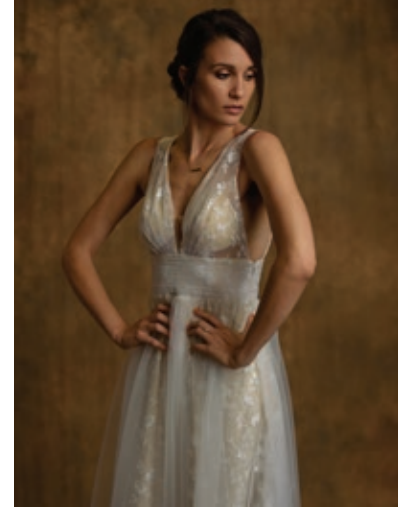
VENUS
 10' x 10' (3.04m x 3.04m) 406026-1010
 10' x 20' (3.04m x 6.09m) 406026-1020
 KIT 62037-2620



MILANO
 10' x 10' (3.04m x 3.04m) 406030-1010
 10' x 20' (3.04m x 6.09m) 406030-1020
 KIT 62037-3020



PETRA
 10' x 10' (3.04m x 3.04m) 406010-1010
 10' x 20' (3.04m x 6.09m) 406010-1020
 KIT 62037-1020



VERANO HAND PAINTED MUSLIN

CRUSHED MUSLIN BACKGROUNDS

Accent Crushed Muslin Backgrounds are dyed and crushed to create a distinct mottled appearance.

• Heavy-duty 100% cotton • Seamless, made from one piece of material • 3" Rod pocket for quick hanging • Carry bag included • Glare-free, matte finish



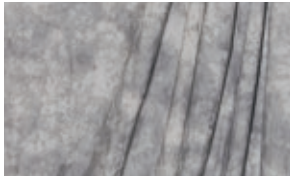
SEDONA RED
 10' x 12' (3.04m x 3.65m) CM0112
 10' x 24' (3.04m x 7.31m) CM0124



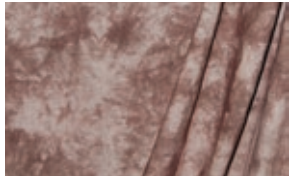
BLUE WINTER
 10' x 12' (3.04m x 3.65m) CM0212
 10' x 24' (3.04m x 7.31m) CM0224



MOCHA BISQUE
 10' x 12' (3.04m x 3.65m) CM0312
 10' x 24' (3.04m x 7.31m) CM0324



GRAY SKIES
 10' x 12' (3.04m x 3.65m) CM0412
 10' x 24' (3.04m x 7.31m) CM0424



AUTUMN BROWN
 10' x 12' (3.04m x 3.65m) CM0512
 10' x 24' (3.04m x 7.31m) CM0524



APEX BLUE
 10' x 12' (3.04m x 3.65m) CM0612
 10' x 24' (3.04m x 7.31m) CM0624



SEDONA RED CRUSHED MUSLIN

WASHED MUSLIN BACKGROUNDS

Accent Washed Muslin Backgrounds are dyed and washed for a subtle blended appearance.

• Heavy-duty 100% cotton • Seamless, made from one piece of material • 3" Rod pocket for quick hanging • Carry bag included • Glare-free, matte finish



SKY BLUE
 10' x 12' (3.04m x 3.65m) WD5012
 10' x 24' (3.04m x 7.31m) WD5024



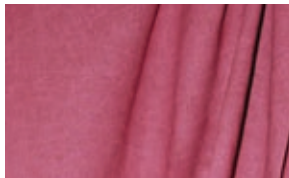
LIGHT GRAY
 10' x 12' (3.04m x 3.65m) WD5112
 10' x 24' (3.04m x 7.31m) WD5124



FOREST GREEN
 10' x 12' (3.04m x 3.65m) WD5212
 10' x 24' (3.04m x 7.31m) WD5224



BROWN
 10' x 12' (3.04m x 3.65m) WD5312
 10' x 24' (3.04m x 7.31m) WD5324



CRANBERRY
 10' x 12' (3.04m x 3.65m) WD5412
 10' x 24' (3.04m x 7.31m) WD5424



DARK GRAY
 10' x 12' (3.04m x 3.65m) WD5512
 10' x 24' (3.04m x 7.31m) WD5524



DARK GRAY WASHED MUSLIN

PRINTED

BACKGROUND PAPER

Savage Printed Background Paper brings versatility and energy to portrait sessions, special events and photo booths! Printed with high definition printers, trendy designs and patterns display continuously along a 53" x 18' (1.35m x 5.5m) roll that is corewound for easy hanging. Offered in a variety of styles from wood and brick to floral and polka dot patterns, these unique and realistic backgrounds photograph beautifully and enhance your creative flair!

FEATURES:

- Fine-tooth, non-reflective surface
- Economical
- Vibrant patterns & realistic textures
- Paper density: 163 GSM
- Acid-free and core-wound for longevity
- Interior core diameter: 2.125" (5.4cm)
- Convenient 53" x 18' size (1.35m x 5.5m)
- Patterns are continuous along entire roll
- 100% Recyclable



WORN PLANKS PRINTED BACKGROUND PAPER



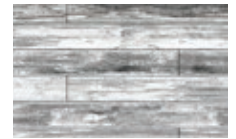
RED BRICK PRINTED BACKGROUND PAPER



WORN PLANKS
P-PA5318WRN



GRAY PINE
P-PA5318GRP



WHITEWASH
P-PA5318WHW



WEATHERED BRICK
P-PA5318WBR



WHITE BRICK
P-PA5318WTB



GRAY & WHITE CHEVRON
P-PA5318GWC



DEEP BLUE HAZE
P-PA5318BH2



CELEBRATION LIGHTS
P-PA5318CBL



IVORY GLOW
P-PA5318IVG



RAINBOW SPRINKLES
P-PA5318RSP



FLOATING HEARTS
P-PA5318FLH



CONGRATULATIONS
P-PA5318CON



PALE WASHED WOOD
P-PA5318PWW



RED BRICK
P-PA5318RBR



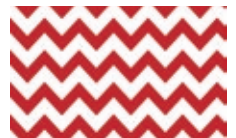
GRUNGE BRICK
P-PA5318GBR



PARTY BANNERS
P-PA5318PBA



GRAY FLORAL
P-PA5318GFL



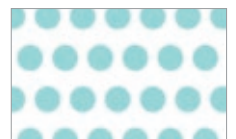
RED & WHITE CHEVRON
P-PA5318RWC



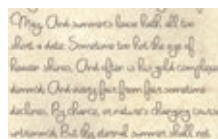
WINTER FROST
P-PA5318WFR



ROSY POLKA DOTS
P-PA5318RPO



AQUA POLKA DOTS
P-PA5318APO



ROMANTIC SCRIPT
P-PA5318ROS



LOVE BURST
P-PA5318LOB



VINTAGE FLORAL
P-PA5318VFL

TRANSLUM™

Add the soft glow of frosted glass to images with Savage Translum™. Made from smooth, texture-free plastic, this versatile material can be used as a diffusion panel, light table, prop setup or portrait background. Subjects on the other side are seen as silhouette shapes. Try backlighting for an easy high-key setup.

FEATURES:

- Sturdy, durable plastic material
- Specialized effect of frosted glass
- Easily cut with scissors for added creativity
- Ideal for silhouettes & backlighting
- Inside core diameter: 2.125" (5.4cm)
- Easily wipes clean after food & drink shoots

HEAVY WEIGHT TRANSLUM

54" x 18' ROLL (1.37m x 5.49m) F-STOP / LIGHT LOSS: 2
55418

MEDIUM WEIGHT TRANSLUM

60" x 18' ROLL (1.52m x 5.49m) F-STOP / LIGHT LOSS: 1.5
46018

LIGHT WEIGHT TRANSLUM

60" x 18' ROLL (1.52m x 5.49m) F-STOP / LIGHT LOSS: 3/4
36018

SHEET VARIETY PACK

12" x 12" SHEETS (30.5cm x 30.5cm) VARIETY - 2 OF EACH WEIGHT
TL1212-PK



HIGH-KEY BACKGROUND



DIFFUSION MATERIAL



TABLETOP BACKGROUND



SILHOUETTES



FIND VIDEO TUTORIALS ON THESE PRODUCTS ON OUR WEBSITE & BLOG

GREEN SCREEN

Digital and chroma key or green screen technology offers photographers virtually unlimited photographic innovation. Our full line of digital and chroma key products incorporates user-friendly software and backgrounds to fit any space or project. They'll take you wherever your imagination leads you...and possibly beyond.

**PURCHASE ANY
GREEN SCREEN**

SOFTWARE OR KIT & GET

**UNLIMITED
ACCESS TO**

3,500+ IMAGE

**EXCLUSIVE
ONLINE GALLERY**



GREEN SCREEN SOFTWARE

Our Green Screen Software Kit makes green screen magic a snap with our easy-to-use Green Screen Wizard Lite software, and includes access to an online image library of 3,500 high resolution digital backgrounds. This software can be used with any green screen backdrop. A great introduction to chroma key technology.

INCLUDES:

- Green Screen Wizard Software (PC/Mac)
- Access to image library featuring 3,500 high-resolution background images

GREEN SCREEN SOFTWARE **DBK720**



GREEN SCREEN PHOTO CREATOR KIT

KIT INCLUDES:

- Green Screen Wizard Software (PC/Mac)
- 5' x 7' (1.52m x 2.13m) Green Screen Muslin
- Removable hooks for hanging Green Screen
- Access to library featuring 3,500 images

GSPCK



GREEN SCREEN SUIT

Designed for live-action chroma key work, our Green Screen Video Suit features a poly/lycra construction, mesh face for breathability and zippers on the back and wrists.

MEDIUM SUIT **GSMED**
LARGE SUIT **GSLG**



HOOD **GSHOOD**

LARGE SHIRT **GSSHIRT**

LARGE PANTS **GSPANTS**

GLOVES **GSGLOVES**



GREEN SCREEN DIGITAL PHOTOGRAPHY KIT

KIT INCLUDES:

- Green Screen Wizard Software (PC/Mac)
- 5'x6' (1.52m x 1.83m) Collapsible Green Screen
- 8' (2.43m) Aluminum background stand
- Access to library featuring 3,500 images

DPK100

GREEN SCREEN BACKGROUNDS



SEAMLESS PAPER
#46 TECH GREEN (PG 7)



VINYL GREEN SCREEN
#V46 CHROMA GREEN (PG 11)



MUSLIN & FABRIC
CHROMA GREEN (PG 16)



COLLAPSIBLE
#CB116 (PG 15)

LED LIGHTING

Make the transition to LED photo and video lights with ease with Savage's ever-growing line of innovative yet affordable LED lighting solutions. Whether you need to step up your home vlogging set with a bright glamour ringlight, or add a couple portable panels to your film interview gear set, we have you covered with long-lasting lighting kits you can rely on every time.

Searching for a tool to spark some creative inspiration? Try one of our exciting and easy-to-use RGB lights to infuse more color into your set. RGB lights are great for light painting, fill lighting or even to create special effects for videos!

WHY LED?

1. LEDs run cool
2. LEDs use less electricity than alternatives like tungsten
3. LEDs are long-lasting
4. Many LEDs are bi-color and color temperature adjustable
5. Constant LEDs allow you to see lighting as you compose shot
6. Seamlessly switch from photo to video without changing lights



H344

NEW

LITE SHAPER®

FLEXIBLE LED PANEL

The first portable, shapable, speedlight & softbox capable LED light source with a lightweight battery, designed for photographers & videographers.

The Savage LiteShaper® means ultimate flexible LED panel versatility. Mount it to your speedlight and use as a modeling light or bend it to shape the direction of your flash's output. Mount inside the Savage ModMaster™ Multi-Fabric Softbox to see the shot before you fire your strobe. Switch from flash to video without needing to remove your speedlight from your camera or your strobe from your softbox. Attach the included frame and secure to a light stand for a compact, shapable light source for both photography and videography. The patent pending design does it all.

NEW INNOVATIVE PRODUCT

PATENT PENDING



FEATURES:

- Daylight balanced, constant LED light source
- Flexible panel design bends and holds its shape
- Emits low heat
- AC/DC Power options for both studio and location use
- Remote control included allows user to independently control up to 4 LiteShaper® panels
- Use as a strobe modeling light (mounted inside the Savage ModMaster™ Multi-Fabric Softbox)
- Switch to video without removing your strobe
- Includes lightweight aluminum frame to mount on light stand
- Attach the front diffuser to soften your flash's harsh light output

SPECIFICATIONS:

- CRI: 93
- Kelvin temperature: 5700K
- Lux at 1 meter: without diffuser: 680 / with diffuser: 490
- Battery run time: 3.5 hours
- Size: 9" x 9" (23cm x 23cm) LED chip area, 11" x 12" (28cm x 30cm) total panel
- Light stand & speedlight mountable
- Mountable inside Savage ModMaster™ Multi-Fabric Softbox
- Power options: On/Off and dimmable for up to 4 light panels using the included radio frequency remote
- Lightweight design weighs less than 1.5 lbs with the included battery attached
- Includes auxiliary USB port for cell phone charging
- 110-240v



MOUNT TO FRAME OR SPEEDLIGHT



MOUNT INSIDE MODMASTER™
MULTI-FABRIC SOFTBOX

INCLUDES:

- LiteShaper® LED panel
- Aluminum panel frame
- Shoe adapter
- Light stand adapter
- Power bank
- Power bank light stand holder
- AC adapter
- 9" (23cm) Battery cable
- 24" (61cm) Battery cable
- Remote control
- Frame diffuser
- Panel diffuser
- Carry bag

LITESHAPER® FLEXIBLE LED PANEL

LSHP-LP

PRO GAMER LIVE STREAM ACCESSORY KIT

NEW



Show off your skills to your online video gaming community with this affordable lighting, background and audio accessory kit which helps create a professional recording environment from your home or office space. Slim LED lights provide soft, even lighting. A reversible gray/chroma green backdrop is easily hung behind you to hide a distracting room or to display your video game background. A mic stand with pop filter enhances the sound quality of your commentary. Record from a DSLR or phone with the tabletop stand and phone holder.

PRO GAMER LIVE STREAM ACCESSORY KIT

FEATURES:

- (2) Slim LED light panels with 8' (2.44m) power supplies
- (3) 28" (71cm) Light stands with weighted lamp holder bases
- (2) Tabletop mount clamps
- (3) Metal ball heads
- (1) 5' x 7' (1.52m x 2.13m) Reversible wrinkle-resistant polyester backdrop (chroma green/gray) with metal grommets
- (2) Adhesive wall hooks
- (1) Microphone stand with pop filter
- (1) Smart phone holder
- (1) Canvas carry bag

PRO GAMER LIVE STREAM ACCESSORY KIT

PGLSA-KIT

LED RINGLIGHTS

17" RAINBOW RGB RINGLIGHT

The Savage RGB Ringlight is our most versatile ringlight yet! Choose between 360 distinct color options in RGB mode to give your fill and rim lights that extra pop! Or, switch over to daylight mode and adjust the color temperature anywhere from 2700K to 10,000K to match available light in any room. Shoot through the center for a perfect round catch light in your subject's eyes in any color. The soft, even light characteristics make the light ideal for glamour shots and key light applications, and the diffused front makes close-in shots easier on any subject's eyes. Easily control the light with the back panel display, or remotely using the Savage Light Manager free smart phone app to try out special effects like rainbow span or strobe!

FEATURES:

- 17" (43cm) Ringlight with 12" (30cm) opening
- Adjustable color temperature + 360 RGB colors
- Shoe mount and ball head for camera mounting
- Even, flicker-free light
- LCD displays power, kelvin, battery & RGB color
- Includes free mobile Light Manager App - See page 32

17" RAINBOW RGB RINGLIGHT
4400MAH - REPLACEMENT BATTERY 2 PACK
6600MAH - REPLACEMENT BATTERY 2 PACK

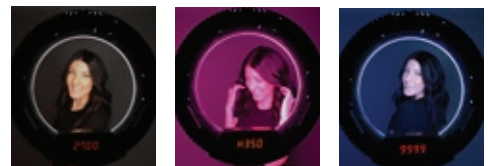
INCLUDES:

- (1) 244 Chip bi-color LED ringlight
- (1) Metal ball head
- (1) 9' (2.74m) AC power cord
- (2) NP-F750 Batteries and chargers
- (1) Padded carry bag

RGB-RL
BNP-F750
BNP-F970



2700K - 10,000K & 360 RGB COLORS



17" VLOGGER RINGLIGHT

The Savage Vlogger Ringlight provides a soft, shadowless light for Youtubers and vloggers while creating desirable round catchlights in the subject's eyes. The diffused front softens the LED output while reducing harsh shadows. Produce seamless makeup applications while filming beauty tutorials using the included mirror. The two included cell phone holders with adjustable arms allow streaming from multiple devices. Control settings are in the front where you need them. The ringlight is bi-color, allowing the user to match any available light in a room or warm the subject for creative purposes.

FEATURES:

- 17" (43cm) diameter with 14" (36cm) x 12" (31cm) inner opening
- Adjustable from 2700K to 5600K
- 2050 Lumens at 1m
- CRI: 95 3200K - 5600K, CRI: 92 at 2700K
- 10% - 100% Stepless dimmer
- Front controls for easy selfie access
- Stream to multiple devices
- Auxiliary USB port on back panel for cell phone charging (5V, 2A)
- Fanless design is ideal for video applications
- Voltage: 110 - 240V

INCLUDES:

- 17" (43cm) Bi-color LED ringlight
- 6" (15cm) Mirror
- Flexible arms
- Shoe mounts
- Cell phone holders

17" VLOGGER RINGLIGHT

LED-RL-BI-16



LED RINGLIGHTS



18" BI-COLOR LED RINGLIGHT

The Savage Luminous Pro Bi-Color LED Ringlight is perfect for both photography and video. Whether you need a smooth on-axis fill light or want to achieve the perfect catch light, this low-heat LED light will fulfill your needs. The soft and even light characteristics make it ideal for glamour shots and key light applications.

FEATURES:

- 18" (46cm) diameter with 12" (31cm) inner opening
- Adjustable from 3200K to 5600K
- 4500 Lumens at 1m
- CRI: 93
- Actual watts: 60
- 10% - 100% Stepless dimmer
- Auxiliary USB port on back panel for cell phone charging (5V, 2A)
- Diffused front for soft, shadowless light
- Fanless design is ideal for video applications
- Even, flicker-free light
- Voltage: 110 – 240V

INCLUDES:

- 240 Chip bi-color LED ringlight
- Metal ball head
- Shoemount
- Bendable arm
- Mobile phone holder
- (3) 1/4"-20 female threads for attaching accessories
- 16' (4.88m) AC power supply
- Padded carry bag

18" LUMINOUS PRO BI-COLOR LED RINGLIGHT **LED-RL-BI-19**



17" LED RINGLIGHT PLUS

The Savage Luminous Pro 17" Ringlight Plus is a versatile, bi-color light for photo, video and beauty applications. Soft, even lighting produced by the ring shape creates striking catchlights in a model's eyes, smoothes skin imperfections and enhances the overall look of your model's skin tone. The diffused front makes close-in shots easier on the subject's eyes. A large rear LCD display allows for easy adjustments. Includes remote control.

FEATURES:

- 17" (43cm) diameter with 12" (30cm) inner opening
- Adjustable from 3200K to 5500K
- 5300 Lumens at 1m at 4300K
- 4300 Lumens at 1m at 3200K
- 3600 Lumens at 1m at 5500K
- CRI: 95
- Actual watts: 60
- 10%-100% Stepless dimmer
- Fanless design is ideal for video applications
- Shoe mount and metal ball head for camera mounting
- 75 Minute run time at full power with included batteries
- Large LCD readout for easy setting adjustments
- Voltage: 110 - 240V

INCLUDES:

- (1) 480 Chip bi-color LED ringlight
- (1) Remote control
- (1) Metal ball head
- (1) 9' (2.74m) AC power supply
- (2) Sony style NP-F750 batteries and chargers
- (1) Padded carry bag

17" LUMINOUS PRO LED RINGLIGHT PLUS **LED-RLPS**
4400MAH - REPLACEMENT BATTERY 2 PACK **BNP-F750**
6600MAH - REPLACEMENT BATTERY 2 PACK **BNP-F970**



18" RINGLIGHT BEAUTY VIDEO KIT

The Savage Ringlight Beauty Video Kit is the perfect kit for vloggers, photographers and beauticians! The Luminous Pro LED Ringlight presents a soft and even light with a flattering circular catchlight to showcase hair and makeup flawlessly. On both the top and bottom of the inner ring is a shoe mount, which the user can attach multiple accessories including a camera, cell phone and mirror to.

INCLUDES:

- (1) 18" (46cm) Luminous Pro LED Ringlight
- (4) Snap-on clear diffusers (5600K)
- (4) Snap-on warm diffusers (3200K)
- (1) 6' (1.83m) Extending light stand
- (1) 6" (15cm) Reversible mirror
- (1) Cell phone holder
- (1) Ball head with removable male shoe
- (1) Adjustable shoe mount
- (1) DSLR mounting bracket
- (1) 15" (38cm) Flexible arm
- (1) 5' x 7' (1.52m x 2.13m) Reversible poly. backdrop (gray/chroma green)
- (2) Adhesive wall hooks
- (1) Carry bag



RINGLIGHT ACCESSORY KIT

The Savage Ringlight Accessory Kit makes creating beauty video content a breeze with your own camera phone and ringlight! Beauty vloggers can mount the mirror directly under a camera phone inside the ringlight for a seamless makeup application while filming. Ideal for ringlights with a 14" (36cm) inner opening or larger.

INCLUDES:

- (1) 6" Reversible mirror with tiltable shoe mount
- (1) 15" Flexible arm with shoe mount
- (1) Adjustable cell phone holder

RINGLIGHT BEAUTY VIDEO KIT **RLBV-K**

RINGLIGHT ACCESSORY KIT **LED-RLAK**

EDGE LIT

ULTRA-THIN LED STUDIO LIGHT PANELS

The Savage Edge Lit LED Lights use LED bulbs that shine inward from the outer edges of the light and are then redirected through a soft white panel. The result is a stunning soft, even and low shadow softbox effect. This makes this light source perfect for everything from no hot spot interviews to portrait photography.

The Savage Edge Lit Pro series combines sleek, ultra-thin panel designs that enhance the look of any studio space, with the desirable benefits of no heat output and no fan noise, making the lights perfect fits for both photo and video applications.

Enjoy the beautifully diffused light emitted through the front diffuser cover from the hundreds of LED chips that line the entire panel edges, providing a soft and stunning portrait style for any subject.



EDGE LIT LED LIGHT MINI

FEATURES:

- 6" (15cm) Round LED light panel
- 5500K Daylight balanced light (+/- 200K)
- 772 Lumens at 1m
- CRI: 95
- Actual watts: 20
- Flicker-free and fanless
- Stepless dimmer for precise adjustments
- Ultra-thin design
- Includes handle for greater lighting control
- Includes ball head for precise angle control
- Ball head features removable shoe mount
- Includes 7' (2.13m) AC power supply
- Includes Sony style NP- F750 battery & charger
- 3 Hour run time at full power with included battery
- Includes padded carry bag
- Voltage: 110 - 240V

EDGE LIT LED LIGHT MINI LED-ELSM
4400MAH - REPLACEMENT BATTERY 2 PACK BNP-F750
6600MAH - REPLACEMENT BATTERY 2 PACK BNP-F970



EDGE LIT PRO LED LIGHT

FEATURES:

- 12" x 9" (30cm x 23cm) Ultra-thin panel
- Bi-Color and blendable from 3200K to 5500K
- 1677 Lumens at 1 meter at 3200K
- 1784 Lumens at 1 meter at 5500K
- CRI: 95
- Actual watts: 60
- Flicker-free and fanless
- LCD displays power, temperature & channels
- Multi-channel remote controls lights or light groups
- Includes rotating light stand adapter
- Includes padded carry bag
- Includes AC power supply & 2 Sony style NP-F750 batteries with charger
- DC run time: 75 minutes at full power
- DMX in/out using RJ11 (phone cord) connectors
- Voltage: 110 - 240V

EDGE LIT PRO LED LIGHT LED-ELLG
4400MAH - REPLACEMENT BATTERY 2 PACK BNP-F750
6600MAH - REPLACEMENT BATTERY 2 PACK BNP-F970



EDGE LIT PRO LED LIGHT KIT

INCLUDES:

- (2) 12" x 9" (30cm x 23cm) Edge Lit Pro LED Lights
- (2) Rotating light stand adapters
- (2) 7' (2.13m) easy-open Savage Drop Stands™
- (1) Multi-channel remote control
- (4) Sony Style NP-F750 batteries and chargers
- (2) 12' (3.66m) AC power cords
- (1) Padded rolling case

EDGE LIT PRO LED LIGHT KIT LED-ELK
4400MAH - REPLACEMENT BATTERY 2 PACK BNP-F750
6600MAH - REPLACEMENT BATTERY 2 PACK BNP-F970



FIND VIDEO TUTORIALS ON THESE PRODUCTS ON OUR WEBSITE & BLOG

LED STUDIO LIGHTING

LED LIGHT WAND

Great for fill lighting, macro photography and product photography. This multi-application tool can hang almost anywhere with the convenient accessory hook, or secured to a light stand or boom. A padded handle makes it comfortable for handheld use as well. Use the stepless dimming control for optimal lighting.

FEATURES:

- Panel measures 2" x 24" (5cm x 61cm)
- 5600K Daylight balanced light
- CRI: 90
- Actual watts: 30
- Stepless dimming control
- Attaches to light stand or boom
- Tilttable, padded handle for handheld use
- Hang anywhere with included hook
- Includes 9' AC power supply
- Voltage: 110 – 240V



LED LIGHT WAND LW-LED

LUMINOUS PRO LED VIDEO LIGHT

A versatile LED light source for photographers and videographers on-the-go. Multiple LED Video Lights are connectable with the optional Multi-Light Connector 2 pack. The connectors allow multiple lights to connect and pivot up to 15 degrees to create a wraparound light effect.

FEATURES:

- Panel measures 5" x 7" (13cm x 18cm)
- 204 High efficiency "chip on board" LEDs
- Color temperature variable from 3200-5400K
- 1530 Lumens at 1m at 3200K or 5400K
- 900 Lumens at 1m at 4200K
- CRI: 91
- Actual watts: 14
- Includes 4.5' (1.37m) AC power supply & 1 Sony style NP-F750 battery with charger
- 3 Hour run time at full power when used with included battery
- Separate stepless dimmer and color temperature adjustments
- Includes standard shoe and 1/4"-20 female thread
- Voltage: 100 - 240V



EASILY ATTACH MULTIPLE LIGHTS TOGETHER WITH MULTI LIGHT CONNECTORS

LUMINOUS PRO LED VIDEO LIGHT

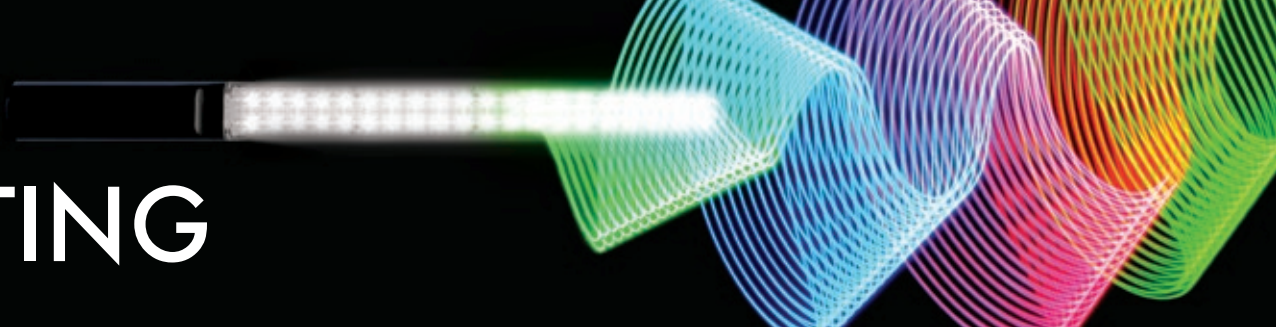
MULTI LIGHT CONNECTOR 2 PK

4400MAH - REPLACEMENT BATTERY 2 PACK

6600MAH - REPLACEMENT BATTERY 2 PACK

LED204
LED204-C2
BNP-F750
BNP-F970

RGB LIGHTING



RGB LIGHT PAINTER PRO LED WAND

The Savage RGB Light Painter Pro LED Wand is an exciting tool for everything from creative light painting to colorful portraits to cool video special effects. The battery operated design allows total freedom of movement. Use hand-held, mounted to a light stand or hung almost anywhere. When dialing in to 200 separate colors, each can also be adjusted for both hue and saturation, giving the user almost unlimited shade and intensity options. Command the RGB Light Painter Pro LED Wand to strobe, span through the color spectrum or even pulse to a music or audio file!

FEATURES:

- 16" (41cm) Long light surface, 24" (61cm) total wand length
- 3200K - 5500K Color temperature blendable
- 200 RGB color options
- CRI: 96
- 318 Bi-color LEDs, 40 RGB LEDs
- Maximum lux: 1621
- Lux at 1m: 6351 (5500K), 6131 (3200K) 5681 (4200K)
- Lumens at 1m: 1041 (RGB Red), 560 (RGB Blue), 1121 (RGB Green)
- Includes 8' (2.44m) AC power supply
- Includes 1 Sony style NP-F750 battery with charger
- Battery run time: 5 hours (RGB mode), 4 hours (Daylight mode)
- Control remotely with free mobile app
- Mobile app can control multiple wands in sync or individually
- Includes bottom 1/4"-20 Female thread, hanging hook with 1 1/4" opening
- Voltage: 100 - 240V

RGB LIGHT PAINTER PRO LED WAND
4400MAH - REPLACEMENT BATTERY 2 PACK
6600MAH - REPLACEMENT BATTERY 2 PACK

LW-RGB
 BNP-F750
 BNP-F970



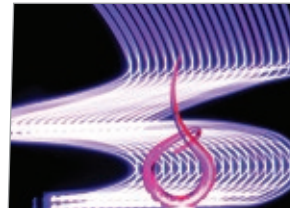
VIDEO TUTORIAL



PORTABLE, HAND-HELD FILL LIGHT



UNIQUE HEADSHOTS & PORTRAITS



FUN LIGHT PAINTING



3200K - 5500K + RGB COLOR LEDS

FREE LIGHT MANAGER SMART PHONE APP

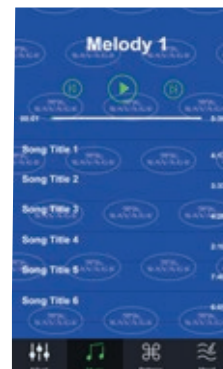
Pair the Savage RGB Light Painter Pro LED Wand and other Savage RGB products with the Light Manager app to become your very own light painting pro!

INCLUDED PRESET FUNCTIONS

- Mood: Light pulses to ambient sounds
- Music: Light pulses to music and audio files
- Patterns: Rainbow, pulse, fade, strobe & flash



SELECT RGB COLORS



SYNC TO AUDIO



SPECIAL EFFECTS

FIND VIDEO TUTORIALS ON THESE PRODUCTS ON OUR WEBSITE & BLOG

RGB LIGHTING

RGB

RGB PRO LED PANEL

The Savage RGB Pro LED Panel is a soft light panel that can handle every need! Whether you need to select from 360 separate and distinct colors, color temperature accuracy or even special effects, this panel can handle the job. Our unique 3 chip design allows us to use both CRI 97 amber and white chips (RGB + W + A) so that color accuracy is not degraded as the temperature is adjusted. Light is controllable using the back panel digital readout, our free Savage Light Manager mobile app or via DMX. The panel can be powered with the included AC power cord or via V-mount style battery (not included).

FEATURES:

- Diffused soft light front panel measures 11.5" x 10" (29cm x 26cm)
- Color temperature blendable from 3200K to 10,000K
- CRI: 97 at 5500K and 3200K
- 360 selectable colors using RGB mode
- Saturation adjustable for selected color
- Special effects available like strobe, span, pulse, lightning, TV screen and sirens
- Cell phone app controllable
- Includes barn doors
- AC/DC power options (V-mount style DC battery not included)
- DMX controllable
- 120° beam angle

RGB-50P SPECS:

- 1621 Lux at 1 meter at 5500K
- 648 Lux at 1 meter at 3200K
- Power supply: 15V, 5A

RGB-100P SPECS:

- 1934 Lux at 1 meter at 5500K
- 1546 Lux at 1 meter at 3200K
- Power supply: 15V, 8A



50W RGB PRO LED PANEL
100W RGB PRO LED PANEL

RGB-50P
RGB-100P

POCKET RGB VIDEO LIGHT & SMART PRO MOBILE PHONE HOLDER

The compact Savage Pocket RGB Video Light is ideal for pairing with a camera phone using the Savage Smart Pro Mobile Phone Holder (sold separately.) With size dimensions similar to a large cell phone, you won't take up much space in your camera bag or purse. This pocket size LED light allows for color correction between 3000K and 6500K to warm your subject or match any available light in any room. Switch to RGB mode and dial in an almost unlimited number of colors and hues for creative mood lighting. Also useful for on-the-go hair and fill lighting. Need some quick special effects for a run-and-gun video? No problem! The Savage Pocket RGB Video Light is capable of dozens of exciting special effects including strobes, fades, police car lights, lightning and many more when controlled through our free Light Manager mobile app (available on Apple App Store and Google Play Store.)

POCKET RGB VIDEO LIGHT FEATURES:

- Compact pocket size: 5" x 3" x 3/4" (13cm x 8cm x 2cm)
- Built in battery
- Run time at full power in RGB mode: 90 mins
- Run time at full power in daylight mode: 90 mins
- Shoe mountable ball head for easy camera mounting
- USB-C charge cord and household plug adapter
- Strobe, fade, pulse and special lighting effects
- Includes free Savage Light Manager App download

PHONE HOLDER FEATURES:

- All metal design
- Works with all smart phones
- Shoe mount for video light/microphone mounting
- Removable super comfort grip handle
- Light stand mountable via 1/4"-20 or 3/8" male threads
- Threaded clamp for extra tight hold
- Tilt swivel allows quick pivot of smart phone from vertical to horizontal positions as well as leveling

POCKET RGB VIDEO LIGHT
SMART PRO MOBILE PHONE HOLDER

RGB-POC
CFS



NEW

RGB



RGB360 COLOR VIDEO LIGHT

The Savage RGB360 Video Light can be used as a very bright onboard video light or switched to its RGB function allowing the user to dial in 360 different colors. No more gels!

FEATURES:

- Panel measures 5" x 6" (13cm x 15cm)
- Color correctable between 3200K - 5700K (daylight mode)
- 2025 Lumens at 1m at 5700K (daylight mode)
- CRI: 95 (daylight mode)
- 360 Color possibilities eliminate the need for gels
- Cycle all colors using auto color mode
- Soft diffused light front panel
- LCD displays battery level, Kelvin & color reference numbers
- Stepless dimmer adjusts from 10% to 100% in both modes
- Includes 1 Sony style NP-F750 battery & charger
- 2 1/2 Hour run time at full power when 5700K bulbs are used
- 4 Hour run time at full power when RGB bulbs are used
- Actual watts: 15 daylight mode / 11 RGB mode
- Light angle 120°
- Tilttable shoe mount with 1/4"-20 female thread for mounting to both cameras & light stands

RGB300 COLOR VIDEO LIGHT
RGB300 COLOR VIDEO LIGHT AC ADAPTER
4400MAH - REPLACEMENT BATTERY 2 PACK
6600MAH - REPLACEMENT BATTERY 2 PACK

RGB-VL
RGB-VL-PS
BNP-F750
BNP-F970



RGB

LED STUDIO LIGHT KITS

LED STUDIO LIGHT KIT

The Savage LED Studio Light Kit features two energy efficient and dimmable tri-band technology LED chip bulbs. Each light produces 5500K daylight balanced light and provide 20,000 hours of lamp life. Bulbs can be separately controlled with included remote up to 50 feet away.

FEATURES:

- 5500K Daylight balanced light
- Low operating temperature, dimmable bulbs
- 20,000 Hours of lamp life
- Tri-Band technology
- CRI: 90
- 9' (2.7m) AC power cords

500W KIT INCLUDES:

- (2) 35W dimmable LED lights (250W incandescent equiv.)
- (2) Umbrella sockets & 9' (2.7m) power cords
- (2) 33" (83cm) Translucent umbrellas
- (2) 6' (1.8m) Light stands
- (2) Removable warming/blue domes
- (1) Remote control
- (1) Carry bag

700W KIT INCLUDES:

- (2) 50W dimmable LED lights (350W incandescent equiv.)
- (2) Umbrella sockets & 9' (2.7m) power cords
- (2) 33" (83cm) Translucent umbrellas
- (2) 6' (1.8m) Light stands
- (2) Removable warming/blue domes
- (1) Remote control
- (1) Carry bag

700W BI-COLOR KIT INCLUDES:

- (2) 50W Bi-color & blendable LED lights (350W incandescent equiv.)
- (2) Umbrella sockets & 9' (2.7m) power cords
- (2) 33" (83cm) Translucent umbrellas
- (2) 6' (1.8m) Light stands
- (2) Removable blue domes
- (1) Remote control
- (1) Carry bag



500 WATT LED STUDIO LIGHT KIT
700 WATT LED STUDIO LIGHT KIT
700 WATT BI-COLOR, BLENDABLE LED STUDIO LIGHT KIT

LED60K-R
LED700K
LED700K-BI

LED LIGHT BULB

The Savage LED Light Bulb produces 5500K daylight balanced light and provides 20,000 hours of lamp life.

FEATURES:

- CRI: 90
- High-grade output
- Low operating temperature
- 85% energy savings
- Includes warming & blue covers
- E26 base (will also work in an E27 socket)
- 2130 Lumens at 1 meter (35W)
- 3000 Lumens at 1 meter (50W / 50W Bi-Color)

35 WATT LED BULB & REMOTE (250W EQUIVALENT)
50 WATT LED BULB & REMOTE (350W EQUIVALENT)
50 WATT LED BI-COLOR BULB & REMOTE (350W EQUIVALENT)

LED30
50WLED
50WLED-BI



2000W LED LOCATION LIGHT KIT

Each of the two cool running Savage LED lights produce the equivalent of 1000 watts of incandescent light (13,000 lumens when included reflectors are used) while using only 100 watts of electricity and providing 50,000 hours of usage, eliminating the need for costly bulb replacement. The stepless power adjustment (0-99) with digital read out ensures output consistency, with minimal fluctuations in Kelvin temperature.

FEATURES:

- 5600K Daylight balanced light
- 13,000 Lumens at 1m (per light)
- CRI: 95
- DB: 35
- Actual watts: 100 (per light)
- Voltage: 100 - 240V

KIT INCLUDES:

- (2) 1000W LED light heads
- (2) 8' (2.43m) Light stands
- (2) 7" (18cm) Reflectors
- (2) 13' (3.96m) AC power cords
- (1) Heavy-duty rolling case

2000 WATT LED LOCATION LIGHT KIT LED2000K



600W LED PORTRAIT LIGHT KIT

The Savage LED Portrait Kit is an ideal lighting solution for both studio work and location photography. Each of the two dimmable high-powered lights comprise 176 chip-on-board LEDs, which together produce the equivalent of 600W incandescent light while only utilizing 70W of electricity. Two included 20" softboxes pop open for quick and easy setup to create soft, even lighting for high-quality portraiture.

FEATURES:

- 5600K Daylight balanced lights
- 856 Lumens at 1m with diffuser
- CRI: 90
- DB: 10
- Actual watts: 35 (per light)
- Voltage: 100 - 240V

KIT INCLUDES:

- (2) Dimmable 176 chip-on-board LED lights
- (2) Quick-open softboxes with detachable baffles
- (2) 6' (1.83m) Light stands
- (2) Protective pouches for LED lights
- (2) AC Universal power cords
- (1) Padded carry bag

LED PORTRAIT KIT LED-SB



A man in a black t-shirt is shown from the back, holding a professional camera up to his eye as if taking a photograph. The background is a plain, light-colored wall. On the right side, the arm and shoulder of another person wearing a light blue shirt are partially visible.

STUDIO EQUIPMENT

Photographers and videographers rely on Savage studio equipment for its dependability and value. We offer an extensive line of studio and location equipment, including light modifiers from small to large, patented design light stands for rugged terrain and core accessories like gaffer tape and clamps. Background stand styles run from portable and lightweight to multi-support bar systems for heavy and wide backdrops.



#SHOOTWITHSAVAGE

LIGHT STANDS

PATENTED

DROP STAND™ **EASY SET LIGHT STAND**

The Drop Stand™ by Savage features unique auto-collapse and extend legs. Simply place the stand on the ground to extend the legs for secure use. Pick the stand up, and the legs automatically retract to allow for quick and easy repositioning of lighting when moving between groups and in tight spaces. No more bending down to adjust locks.

FEATURES:

- Gently push down to automatically extend legs, pick up to automatically retract legs
- Reversible 1/4"-20 and 3/8" stud adapter usable in either the top or side of stand
- Air damped to prevent accidental equipment crashes while lowering
- Max weight load 12 lbs. – 16 lbs. depending on size
- Aluminum collars

7' STAND (2.13m) **DS-007**

9' STAND (2.74m) **DS-009**

13' STAND (3.96m) **DS-013**

Patent # 6,454,228 B1 & 5,934,628



LEGS EXTEND & RETRACT AUTOMATICALLY



NEW INNOVATIVE PRODUCT
PATENTED

CONVERTIBLE DROP STAND™ & BOOM ARM

The unique tilt mechanism used in the Savage Convertible Drop Stand™ & Boom Arm allows use as either a 12' Drop Stand™ easy-open light stand or as a medium-duty boom. The combination of a boom and light stand that can be quickly set up in either configuration, combined with the quick repositioning abilities of our exclusive Drop Stand™ legs make this a must-have for photographers on-the-go.

LIGHT STAND SPECIFICATIONS:

- 4 Section
- Maximum height: 12' (3.6m)
- Minimum usable height: 51" (129cm)
- Collapsed length: 47" (119cm)
- Footprint: 32" (81cm)
- Air dampened in 2 sections
- Maximum load: 10 lbs

BOOM SPECIFICATIONS:

- Maximum usable boom length: 60" (152cm)
- Minimum usable boom length: 8" (20cm)
- Maximum load: 5 lbs.

INCLUDES:

- (1) Convertible 12' (3.6m) light stand/boom
- (1) Counter balance sand bag
- (1) Padded carry bag

CONVERTIBLE DROP STAND™ & BOOM ARM

CS-CBL



NEW INNOVATIVE PRODUCT
PATENTED

DROP STAND™ & BOOM ARM

FEATURES:

- Air cushioned stand
- 1/4"-20 & 3/8" Reversible stud
- Auto open and close legs for quick repositioning
- Double zippered sand bag for counter balance
- Complete 9' (2.7m) Drop Stand™ is usable without boom
- Padded carry bag

INCLUDES:

- (1) 9' (2.7m) Drop Stand™
- (1) Extendable boom arm
- (1) Counter balance sand bag
- (1) Padded carry bag

DROP STAND™ & BOOM ARM

DS-009-DB



NANO LIGHT STAND

- Max height: 6' (1.83m)
- Min height: 20" (51cm)

6' NANO LIGHT STAND LS-LA6



ALUMINUM LIGHT STAND

- Max height: 8' (2.44m) or 10' (3.05m)
- Air cushioned
- 1/4"-20 & 3/8" Threaded stud

8' LIGHT STAND LS-C8
10' LIGHT STAND LS-C10AC



HEAVY DUTY LIGHT STAND

- Max height: 10' (3.05m) or 13' (3.96m)
- Air cushioned
- 1/4"-20 & 3/8" Threaded stud

10' LIGHT STAND LS-B10AC
13' LIGHT STAND LS-B13AC



MULTIFLEX LIGHT STAND

“Form and function blend together into one of the most versatile stands I have worked with to date.”

– Sal Cincotta

MULTIFLEX

Nothing gets in the way with the Savage MultiFlex Light Stand. Whether you need to set up your lights in the corner of a small office, the middle of a city street staircase, on a grassy hill or up against the side of a bus, it'll go wherever you need it to get the perfect shot.

6' MULTIFLEX LIGHT STAND
10' MULTIFLEX LIGHT STAND

MF-6
MF-10

NEW INNOVATIVE PRODUCT

PATENT PENDING



FEATURES:

- Third leg can be individually adjusted from base for setup on uneven surfaces or tight spaces
- All legs include telescoping sections and flip locks for further individual adjustments
- Rubber footing increases grip on ground surface
- Large footprint makes stand wind-resistant
- Includes bubble level to ensure level setup
- All 3 upright stand sections are air-cushioned
- Wide, flat stand base provides added stability when a small footprint is required
- Velcro strap attached for secure transport
- Steel 5/8" double stud with 1/4"-20 / 3/8" threads
- Nylon carry bag with foam padding provides convenient transportation and storage

MULTIPLE UNIQUE USES WITH MULTIFLEX



CORNERS



UNEVEN TERRAIN



UNDER FURNITURE



STAIRS



NEW

GRIP GEAR

We're excited to launch our brand-new line of professional grip gear! Pro grips need heavy-duty stands they can drag through the mud and put to the test. With patented features on Savage C-Stands that allow a user to mount multiple lights or modifiers from one stand, or set up closer to a corner or obstacle than ever before, we now offer a full suite of production solutions to make life on set a little bit easier.



VERSATILE MOUNTING OPTIONS

INTRODUCING... THE SAVAGE C-STAND

A FULL SUITE PRODUCTION SOLUTION

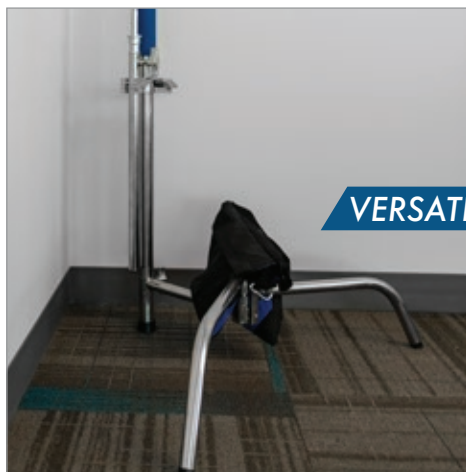
NEW INNOVATIVE PRODUCT

PATENT PENDING



PATENT PENDING FEATURE
JUNIOR RECEIVER ON THE LOWEST LEG

Mount the included 20" (51cm) riser to the leg for maximum effect from multiple lights or modifiers in compact spaces!



VERSATILITY WITHIN TIGHT SPACES

Mount the 40" (102cm) riser to the leg for positioning into a corner!



ADJUSTABLE HEIGHT LEG FOR STAIRS

Extend the riser through the leg to level the stand on stairs or uneven surfaces!

ROCKY MOUNTAIN LEG & TURTLE BASE!



GRIP GEAR



NEW INNOVATIVE PRODUCT

PATENT PENDING

40" STAINLESS STEEL C-STAND WITH GRIP ARM KIT

FEATURES:

- Heavy-duty stainless steel 40" (102cm) double riser stand
- 40" (102cm) Grip arm with two gobo head clamps
- Junior receiver on lowest leg
- Includes 20" (51cm) leg leveler with auxiliary baby pin for low angle lighting
- Leg leveler for uneven surfaces or stairs
- Dual baby pin mount possibilities
- Removable turtle base
- Pull release knob locks legs into open or closed position
- Blue padded handle for comfortable grip
- Spring loaded top riser
- 40" Riser includes hanging hook for cables or sandbags and storage clip for 20" riser
- 8mm – 35mm Gobo head clamping range
- Gobo head clamps lined with EPDM rubber to prevent damage on thin walled tubes
- Maximum load: 25 lbs. (11.33kg)
- Minimum working height: 53" (135cm)
- Maximum working height: 9' 6" (290cm)
- Footprint: 25" (64cm)
- Collapsed leg width: 22" (56cm)
- Total weight: 24 lbs. (10.9kg)

40" (102cm) **STAINLESS STEEL C-STAND WITH GRIP ARM KIT**

40" (102cm) **STAINLESS STEEL C-STAND**

40" (102cm) **STAINLESS STEEL DOUBLE RISER**

20" (51cm) **STAINLESS STEEL C-STAND WITH GRIP ARM KIT**

CSS-200S

CSS-100S

CSS-UP200S

CSS-20



PATENT PENDING

40" BLACK COATED STAINLESS STEEL C-STAND WITH GRIP ARM KIT

HEAVY DUTY
BLACK PAINT
REDUCES RUST
& DAMAGE



FEATURES:

- Heavy-duty stainless steel 40" (102cm) double riser stand
- Heavy duty black paint to reduce rust and damage
- 40" (102cm) Grip arm with two gobo head clamps
- Junior receiver on lowest leg
- Includes 20" (51cm) leg leveler with auxiliary baby pin for low angle lighting
- Leg leveler for uneven surfaces or stairs
- Dual baby pin mount possibilities
- Removable turtle base
- Pull release knob locks legs into open or closed position
- Blue padded handle for comfortable grip
- Spring loaded top riser
- 40" Riser includes hanging hook for cables or sandbags and storage clip for 20" riser
- 8mm – 35mm Gobo head clamping range
- Gobo head clamps lined with EPDM rubber to prevent damage on thin walled tubes
- Maximum load: 25 lbs. (11.33kg)
- Minimum working height: 53" (135cm)
- Maximum working height: 9' 6" (290cm)
- Footprint: 25" (64cm)
- Collapsed leg width: 22" (56cm)
- Total weight: 24 lbs. (10.9kg)

40" (102cm) CHROME/BLACK C-STAND WITH GRIP ARM KIT

CB-600K

40" (102cm) CHROME/BLACK C-STAND

CB-600

20" (51cm) CHROME/BLACK C-STAND

CB-600-20

20" (51cm) CHROME/BLACK C-STAND WITH GRIP ARM KIT

CB-600-20K

40" STEEL GRIP ARM WITH GOBO HEAD CLAMPS

FEATURES:

- Length: 40" (106cm)
- Spigot ends with 3/8" male thread
- Weight: 4 lbs. (2kg)
- Stainless steel plated steel tubing
- Includes an aluminum gobo head and our unique gobo clamp to more easily secure reflectors, scrims, flags and more

40" (102cm) STEEL GRIP ARM WITH GOBO HEAD CLAMPS

CS-AGC

**40" (102cm) BLACK COATED STEEL GRIP ARM WITH GOBO HEAD CLAMPS
GOBO HEAD CLAMP**

CB-AGC

CS-GC



JUNIOR TO BABY PIN

FEATURES:

- 5/8" Baby pin
- 1-1/8" Junior pin

JUNIOR TO BABY PIN

CS-BP



GRIP GEAR



NEW INNOVATIVE PRODUCT

PATENTED

PRO DUTY STEEL DROP STAND™

The Savage Pro Duty Drop Stand™ combines the indoor and outdoor capabilities of a heavy-duty, chrome plated steel light stand with the ability to open and close its legs automatically. No need to collapse the stand before moving between speakers stands, stage props or other tight spaces... our Drop Stand™ technology uses gravity to do the job for you. Just lift the stand to collapse the tripod and drop back on to a surface to reopen! Rugged steel construction will hold even for the most demanding applications.

7' SPECIFICATIONS:

- 3 Section stand
- Maximum height: 7' (2.14m)
- Minimum height: 38" (96cm)
- Folded length: 38" (96cm)
- Footprint: 28" (71cm)
- Weight: 11 lbs.
- Maximum load: 30 lbs.
- Top: 3/8" stud

10' SPECIFICATIONS:

- 3 Section stand
- Maximum height: 10' (3.04m)
- Minimum height: 49" (124cm)
- Folded length: 49" (124cm)
- Footprint: 37" (94cm)
- Weight: 17 lbs.
- Maximum load: 15 lbs.
- Top: 3/8" stud

7' STAND (213CM) **DSS-7**
10' STAND (305CM) **DSS-10**
CASTERS (3PK) **CS-C**



NEW INNOVATIVE PRODUCT

PATENTED

PRO DUTY STEEL DROP STAND™ & BOOM

FEATURES:

- 10' Savage Steel Drop Stand™ with Accessory Arm and 2 Grip Clamps
- Max usable grip height: 150" (380 cm)
- Grip arm length: 48" (120 cm)
- Grip clamp material: Aluminum
- Grip arm: Chrome plated steel tubing
- Second fixed grip for securing flags, scrims, reflectors & accessories
- Maximum stand load: 15 lbs. (7 kg)
- Maximum grip arm load 5 lbs. (2.2 kg)
- Folded length: 49" (124 cm)
- Footprint: 37" (94 cm)
- Weight: 22 lbs. (10 kg)
- Includes carry bag

10' PRO DUTY DROP STAND™ & BOOM **DSS-10-SB**



48" STEEL GRIP BOOM ARM ONLY **SB-1**

NEW INNOVATIVE PRODUCT

PATENT PENDING

ROLLING BASE

Rolling base with a double junior receiver. This patented feature allows a user to mount multiple lights or accessories from one stand. Use with any standard C-stand riser or mount a light ultra-low to the ground using just a baby pin to allow for easy repositioning. Extendable legs make it a very stable stand for mounting equipment with an off-center weight such as an overhanging light or microphone. Folds up compactly while remaining rollable even in collapsed position.



FEATURES:

- Stainless steel
- 2 Junior receivers
- Low angle 56° spread between each leg
- Extendable legs
- 5/8" Stud receivers on legs give extra mounting flexibility
- Collapsed: 11" wide x 26" long x 6.5" tall (28cm x 66cm x 17cm)
- Open: 27" wide x 25" long (69cm x 64cm)
- Legs extended: 45" wide x 44" long (114cm x 112cm)

ROLLING BASE

CS-BASE



TRIPLE MOUNT RACK

Mount up to three light heads from one stand. Ideal for use with Savage C-Stands.

TRIPLE MOUNT RACK

LS-TMR

NEW INNOVATIVE PRODUCT

PATENT PENDING

V-HOLD FOR LIGHT MODIFIERS

Double pole holder articulates into a V-shape for unprecedented new mounting options for scrims, reflectors and even cut-to-size diffusion materials like Savage Translum®. Attachable to baby pins and 5/8" studs, the V-Hold can expand to hold scrims and diffusers as wide as 94" (2.39m).



FEATURES:

- Collapsed length: 25.6" (65cm)
- Weight: 3.5 lbs. (1.6kg)
- Two cross through 5/8" mounting options
- Can be mounted horizontal or vertical
- Clamp on round objects up to 1.6" (42mm)

V-HOLD FOR LIGHT MODIFIERS

V-POLE



SUPER CLAMP

A versatile clamp used for securing lights, modifiers, cameras and many more production tools. Includes a standard 1/4"-20 / 5/8" stud adapter.

SUPER CLAMP

SC-100

NEW INNOVATIVE PRODUCT

PATENT PENDING

DOUBLE COLUMN STAND

Easily maneuverable double-column stand can serve as a multi-purpose studio accessory to hang backgrounds, reposition multiple lights while keeping the same configuration, mount reflectors or function as a boom holder with a low center of gravity. Provides a very safe and stable base. Folds down compactly.



FEATURES:

- Locking 3" (8cm) casters on legs
- Cross braces unfold easily from one side with sliding hinge
- Stainless steel construction
- Collapses to 13" W x 37" D x 49" H (33cm x 94cm x 124cm)
- Opens to 63" W x 37" D x 116" H (160cm x 94cm x 295cm)

DOUBLE COLUMN LIGHT STAND

60RDS

MODMASTER™

ADAPTABLE SPEEDLIGHT SOFTBOX

The Modmaster™ Adaptable Speedlight Softbox is a very easy-to-open, versatile softbox, complete with a detachable speedlight adapter. Handhold with the comfort grip handle or attach to any light stand with a 5/8" stud. Remove the speedlight adapter and the softbox can attach to any studio strobe with the included Bowens mount. When your photo shoot is done, the modifier collapses down in seconds into a single piece for easy storage.

Extra feature: Attach as many as 5 speedlights and mount an umbrella (not included) to the adapter when high power is needed.



EASY SNAP OPEN & CLOSE



COLLAPSES AS ONE PIECE

#SHOOTWITHSAVAGE



FEATURES:

- Softbox collapses as a single piece
- Silver Reflective Interior
- Sets up in seconds with easy snap-open features
- Mount Bowens studio strobes or speedlights
- Adapter can also be used with an umbrella and up to 5 speedlights for high power application

25" ADAPTABLE SPEEDLIGHT SOFTBOX
35" ADAPTABLE SPEEDLIGHT SOFTBOX

SB-OCT65
SB-OCT90

MODIFIERS & ADAPTERS

MODMASTER™ MULTI-FABRIC OCTAGONAL SOFTBOX



The Savage ModMaster™ Multi-Fabric Softbox was designed to create extreme flexibility in a single light modifier. The photographer on-the-go can turn their light into a soft, warm or high contrast light source while only needing to carry and set up one softbox. Attach grid accessory if greater directional light control is desired. Whether you seek multiple effects or the increased directional light of a grid, it's all at your finger tips in one bag. The bag is designed so that the user can leave the ModMaster™ partially assembled for fast and easy on location set up.

FEATURES:

- White softbox cover for the softest and diffused directional light
- Create a high contrast directional light source while also increasing your light output by applying the silver inserts or use the gold side for a warm look
- Fast set up speeding with Bowens attachment (adapters for most other strobes sold separately)

35" MULTI-FABRIC SOFTBOX	(89cm)	SB-35
59" MULTI-FABRIC SOFTBOX	(150cm)	SB-59
78" MULTI-FABRIC SOFTBOX	(198cm)	SB-78



REVERSIBLE REFLECTIVE PANELS

MODMASTER™ COLLAPSIBLE BEAUTY DISH



The Savage ModMaster™ Collapsible Beauty Dish combines an impressive amount of light modification options with the convenience of easy storage, transportation and collapsibility. 16 Ribs create an almost perfectly round beauty dish when the included metal deflector dish is used. Remove the dish and Velcro in the soft white internal diffuser to create a soft, diffused look on your subject's face while maintaining higher contrast around the edges. Use the external baffle to convert your beauty dish into a round softbox. For a more directional light source, a grid is also included.

FEATURES:

- Almost completely round light source
- Beauty dish and softbox capabilities in one unit
- Store partially assembled in carry bag for fast set-up
- Bowens mount included (adapters for most other strobes sold separately)

24" COLLAPSIBLE BEAUTY DISH	(61cm)	BDC-24
31" COLLAPSIBLE BEAUTY DISH	(79cm)	BDC-31
47" COLLAPSIBLE BEAUTY DISH	(119cm)	BDC-47



COLLAPSES FOR EASY TRANSPORT

MODMASTER™ OCTAGONAL SPEEDLIGHT BEAUTY DISH

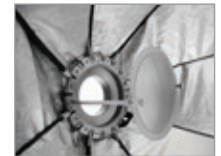


Easily convert your octagonal softbox to a beauty dish in minutes. The unique design collapses for storage but sets up fast. The included universal speedlight adapter adapts to any speedlight. Remove the adapter and use with any studio strobe brand with a Bowens front mount. The silver interior maximizes light output but can also be cooled down with the front diffuser. Attach included grid for a more directional light source.

FEATURES:

- Collapsible beauty dish using the supplied aluminum deflector plate
- Remove the deflector plate and convert to a softbox
- Includes universal speedlight adapter
- Remove the speedlight adapter and use with any studio strobe with a Bowens mount front (adapters for most other strobes sold separately).
- Silver interior for maximum light output

36" OCTAGONAL SPEED LIGHT BEAUTY DISH	(91cm)	BD-36
48" OCTAGONAL SPEED LIGHT BEAUTY DISH	(122cm)	BD-48



USE AS SOFTBOX OR BEAUTY DISH

MODIFIER ADAPTERS

NOT FOR USE WITH THE MODMASTER™ ADAPTABLE SPEEDLIGHT SOFTBOX.



SPEEDLIGHT
ADP-SL



BOWENS
ADP-BW



PROFOTO
ADP-PF



BALCAR/WHITE LIGHTNING
ADP-BC



ELINCHROM
ADP-EC



BRONCOLOR
ADP-BRB



BRONCOLOR IMPACT, VISATEC
ADP-BRS



UMBRELLAS & REFLECTORS

Savage reflectors and umbrellas are essential and inexpensive tools for manipulating light in studio and on location. Our umbrellas and reflectors provide a wide range of choices to suit virtually every situation. Umbrellas are ideal for providing diffused, soft light indoors and out. Reflectors are primarily used to manage light outdoors. They're a versatile and inexpensive way to create broader, more directional light sources in situations without enough ambient light, for controlling shadows, and increasing illumination to even out contrast or skin tones.



TRANSPARENT UMBRELLA

36" (91cm) PUR-36T
43" (109cm) PUR-84T
72" (182cm) PUR-86T



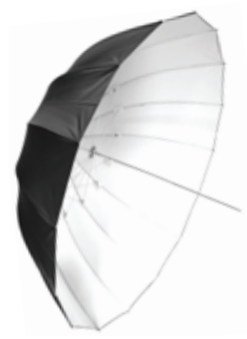
TRANSPARENT DEEP UMBRELLA

65" (165cm) PUR-65T



BLACK/WHITE UMBRELLA

36" (91cm) PUR-36WB
43" (109cm) PUR-84WB
72" (182cm) PUR-86W



BLACK/WHITE DEEP UMBRELLA

65" (165cm) PUR-65WB



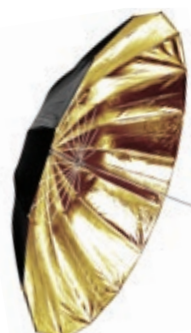
BLACK/SILVER UMBRELLA

36" (91cm) PUR-36SB
43" (109cm) PUR-84SB
72" (182cm) PUR-86S



BLACK/SILVER DEEP UMBRELLA

65" (165cm) PUR-65SB



BLACK/GOLD UMBRELLA

43" (109cm) PUR-84BG

UMBRELLA COVERS



UMBRELLA SOFTBOX

36" (91cm) USB36
43" (109cm) USB43



UMBRELLA SOFTBOX BOUNCE

36" (91cm) USB36B
43" (109cm) USB43B



DIFFUSER COVER

65" (165cm) PUR-COVDIV



BOUNCE PANEL

65" (165cm) PUR-COVBNB

5-IN-1 REFLECTOR WITH CARRY BAG

This 5-in-1 photo reflector by Savage offers superior control over ambient and studio lighting with 5 versatile surfaces to help achieve any desired look. Choose from gold, silver, black, white, or translucent to soften contrast, harsh illumination and flash. The white provides soft, neutral fill light or use the black for "negative reflection" to strengthen shadows. The gold/silver sleeve reflects the light to add warm or cooling tones to the subject. The reflector folds down to approximately 1/3 its open size and stores in the included carrying bag. Offered in round and rectangular shapes as well as multiple sizes.

22" ROUND 5-IN-1 (55cm)	RF5-122
32" ROUND 5-IN-1 (81cm)	RF5-132
43" ROUND 5-IN-1 (109cm)	RF5-143
36" X 48" RECTANGULAR 5-IN-1 (91cm x 152cm)	RF5-13648
40" X 60" RECTANGULAR 5-IN-1 (101cm x 121cm)	RF5-14060



9-IN-1 REFLECTOR KIT

The 9-in-1 Photo Reflector Kit by Savage offers superior control over ambient and studio lighting with 9 versatile surfaces to help achieve any desired look, including: Translucent, Gold, Silver, Daylight, Black, White, Gray, Chroma Green & Blue. Gray reflector provides 18% gray for accurate light metering. Chroma Green and Chroma Blue can be used as green screen backgrounds for head shots and product shoots. Offered in multiple sizes, with option for a stand kit.

KIT INCLUDES:

- (1) 43" Round reflector with carry bag
- (1) Boom arm & reflector holder
- (1) 9' Air dampened stand & carry bag

43" (109cm) ROUND 9-IN-1 KIT WITH STAND RF9-KIT



REFLECTING PANELS

BRIGHT SILVER REFLECT-O-BOARD 1825

Bright Silver Reflect-O-Board adds a cool touch to reflected light and provides a heavier contrast when a powerful, yet neutral fill light is desired. Bright Silver has a shiny finish for a more powerful effect. Reflective front with white back. Sized to 32" x 40" (81cm x 101cm) & 25/carton.

DULL SILVER REFLECT-O-BOARD 1820

The finish on Dull Silver Reflect-O-Board provides a bit more contrast than just plain white reflectors and cools down warm light in situations calling for it. This finish provides a softer, more diffused effect than our Bright Silver Reflect-O-Board. Reflective front with white back. Sized to 32" x 40" (81cm x 101cm) & 25/carton.

1835

Dull Gold Reflect-O-Board adds a warm touch to reflected light and makes the most of afternoon light as it fades. Dull Gold has a soft, matte finish and will produce a softer, more diffused effect. Reflective front with white back. Sized to 32" x 40" (81cm x 101cm) & 25/carton.

BACKGROUND STANDS

ECONOMY BACKGROUND STAND

Ideal for the student or part-time photographer. Collapsible design is easy to set up without an assistant. Supports lightweight backgrounds up to 10' (3.05m) wide x 8' (2.44m) tall.

FEATURES:

- Max weight limit: 15 lbs.
- Weighs: 13 lbs.
- Steel construction
- Matte black finish
- Extends from 46" (1.17m) to 10' 4" (3.15m) wide and 48" (1.22m) to 7' 9" (2.36m) high
- No tools required
- Carry bag included

ECONOMY BACKGROUND STAND

REPLACEMENT UPRIGHT - EXTENDS TO 7' 9" (2.36m)

REPLACEMENT CROSSBAR - OPENS TO 10' 4" (3.14m) , COLLAPSES TO 46" (1.17m)

62099
07
08



PORT-A-STAND BACKGROUND STAND

A versatile and portable backdrop stand that collapses for easy carrying, making it ideal for both studio and location shoots. This strong yet lightweight stand can accommodate up to 107" x 36' (2.72m x 11m) seamless paper or cloth backgrounds.

FEATURES:

- Max weight limit: 25 lbs.
- Weighs: 17 lbs.
- Matte black finish
- Aluminum construction
- Extends from 52" (1.32m) to 10' 7" (3.23m) wide and 42" (1.07m) to 9' 7" (2.92m) high
- 41" (1.04m) Large footprint for added stability
- Crossbar sections twist and lock for easier extension for extra rigidity and less sag
- Air-cushioned upright stand sections for easy adjustments
- Upright stands employ 1/4"-20 / 3/8" adapter and can be used as light stands
- No tools required
- Carry bag included

PORT-A-STAND BACKGROUND STAND

PORT-A-STAND WITH WHITE 53" PAPER KIT

PORT-A-STAND REPLACEMENT CARRYING BAG

REPLACEMENT UPRIGHT - EXTENDS TO 9' 7" (2.92m)

REPLACEMENT CROSSBAR - OPENS TO 10' 7" (3.23m), COLLAPSES TO 52" (1.32m)

62037
62037-50K
06-17
04-17
05-17



PS2-17 PS3-17 PS4-17 PS5-17

MULTIPLE POLEVAULT BACKGROUND STAND

An exceptionally strong backdrop stand that can support either three rolls of 107" x 12yds (2.7m x 11m) background paper simultaneously or one roll of 140" (3.56m) wide background paper.

FEATURES:

- Max weight limit: 25 lbs. (Crossbar 2 & 3), 70 lbs. (Crossbar 1)
- Weighs: 33 lbs.
- Matte black finish
- Aluminum construction
- Includes 3 standard crossbars that extend from 65" (1.65m) to 10' 4" (3.15m) and support up to 25 lbs. each, and 1 extra long crossbar that extends from 60" (1.52m) to 12' 7" (3.84m) and supports up to 70 lbs.
- No tools required

MULTIPLE POLEVAULT BACKGROUND STAND

REPLACEMENT UPRIGHT - EXTENDS TO 9'4" (2.84m)

REPLACEMENT CROSSBAR 1 - OPENS TO 12' 7" (3.84m) , COLLAPSES TO 60" (1.52m)

REPLACEMENT CROSSBAR 2 & 3 - OPENS TO 10' 4" (3.14M) , COLLAPSES TO 46" (1.17M)

63151
01
03
08



MP2 MP3

PROMO BACKGROUND STAND

Ideal for photo booths, tradeshow and special events. Two slim but stable feet allow the stand to be set up virtually anywhere, unlike others with large extending footprints. A horizontal crossbar attached at the top and bottom of the stand can be used to clamp a banner or photography backdrop to, keeping it taut, wrinkle-free and photo-ready.

FEATURES:

- Max weight limit: 15 lbs.
- Weighs: 13 lbs.
- Aluminum tubing and collars with steel base
- Matt black finish
- Wide but slim footprint
- Twist locking sections
- Extends from 68" (1.73m) to 10' 5" (3.18m) and 39" (99cm) to 8' 5" (2.57m) high
- Carry bag included

PROMO BACKGROUND STAND 601010



12 X 12 BACKGROUND STAND

An very strong backdrop stand that can support large backgrounds up to 12' (3.66m) wide and 12' (3.66m) high.

FEATURES:

- Max weight limit: 20 lbs.
- Weighs: 17 lbs.
- Aluminum construction
- Matte black finish
- Extends to 12' (3.66m) wide x 12' (3.66m) high
- Reinforced four-section crossbar reduces sag
- Crossbar also usable with only two or three sections when 6' (1.83m) or 9' (2.74m) wide applications are preferred
- Upright stand footprint measures 35" (89cm)
- Supports large muslin or cloth backdrops and up to 107" x 36' (2.72m x 11m) paper or 9' x 10' (2.74m x 3.05m) vinyl backdrop rolls
- No tools required
- Carry bag included

MULTI-SECTION, SNAP-TOGETHER CROSSBAR ALLOWS FOR SIMPLE EXTENDING & SHORTENING OF CROSSBAR

12' X 12' BACKGROUND STAND 601212



UNIVERSAL BACKGROUND STAND

An advantageous support system for large studios. With 3 upright stands and interlocking crossbars, the stand can extend out to 24' (7.32m) for extra-wide theater productions or large commercial shoots. A unique middle bracket allows for the stand to be set up in a corner as well. Easily pivot and reposition stands to achieve any angle you desire.

FEATURES:

- Max weight limit: 20 lbs. per section
- Weighs: 25 lbs.
- Aluminum construction
- Matte black finish
- Extends to 24' (7.32m) wide x 10' (3.05m) high
- Air dampened in all sections
- Reinforced crossbar consists of four sections to reduce sag
- Crossbar also usable with only two or three sections when 6' (1.83m) or 9' (2.74m) wide applications are preferred
- Use as double-wide stand, corner stand or configure custom angles per your needs
- Can support multiple backgrounds, making it ideal for quick scene changes
- No tools required
- Carry bag included

MULTI-SECTION, SNAP-TOGETHER CROSSBAR ALLOWS FOR SIMPLE EXTENDING & SHORTENING OF CROSSBAR

UNIVERSAL BACKGROUND STAND 601024



STUDIO ACCESSORIES

GAFFER TAPE

Savage Gaffer Tape is available in standard matte black, gray, chroma green & white, in 1" and 2" options. The cloth backing with polyethylene coating is heat-resistant to 175° Fahrenheit for up to three hours. Blended synthetic resin & natural rubber compound allows for non-transferring adhesion. Always a clean removal with no residue.



BLACK		
4 PACK	1" x 55 YARDS (25mm x 50m)	T-GB4-1
20 PACK	1" x 55 YARDS (25mm x 50m)	T-GB20-1
4 PACK	2" x 55 YARDS (50mm x 50m)	T-GB4
20 PACK	2" x 55 YARDS (50mm x 50m)	T-GB20
20 PACK MINI	2" x 4 YARDS (50mm x 3.6m)	T-M20
GREEN		
4 PACK	1" x 55 YARDS (25mm x 50m)	T-GN4-1
20 PACK	1" x 55 YARDS (25mm x 50m)	T-GN20-1
4 PACK	2" x 55 YARDS (50mm x 50m)	T-GN4
20 PACK	2" x 55 YARDS (50mm x 50m)	T-GN20
GRAY		
4 PACK	1" x 55 YARDS (25mm x 50m)	T-GG4-1
20 PACK	1" x 55 YARDS (25mm x 50m)	T-GG20-1
4 PACK	2" x 55 YARDS (50mm x 50m)	T-GG4
20 PACK	2" x 55 YARDS (50mm x 50m)	T-GG20
WHITE		
4 PACK	1" x 55 YARDS (25mm x 50m)	T-GW4-1
20 PACK	1" x 55 YARDS (25mm x 50m)	T-GW20-1
4 PACK	2" x 55 YARDS (50mm x 50m)	T-GW4
20 PACK	2" x 55 YARDS (50mm x 50m)	T-GW20

SPRING CLAMPS

An essential tool for any seamless paper user. Clamp the backdrop roll to your support stand to keep the paper from unfurling during a photo shoot.



4" SPRING CLAMP 50 PACK	C-4-50
6" SPRING CLAMP 20 PACK	C-6-20
SEAMLESS ACCESSORY KIT	AP-3

SEAMLESS ACCESSORY KIT

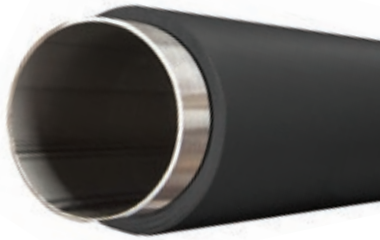
The Savage Seamless Paper Background Accessory Kit includes two mini 2" x 4yds rolls of black gaffer tape, and one 4" spring clamp.

BACKGROUND LEADER BAR

The Savage Background Leader Bar is a two-piece aluminum bar that quickly and easily attaches to the bottom edge of paper, vinyl, or cloth backgrounds. The weight of the Leader Bar reduces ripples and draping, prevents curling, and helps position the background for a perfect sweep.



SMALL LEADER BAR	4.8' (136cm)	LB153
INCLUDES FREE 53" SUPER WHITE SEAMLESS PAPER		
BEST SUPPORTS 53" (1.35M) BACKGROUNDS		
LARGE LEADER BAR	8.9' (272cm)	LB112
INCLUDES FREE 107" SUPER WHITE SEAMLESS PAPER		
BEST SUPPORTS 86" (2.18M) & 107" (2.72M) BACKGROUNDS		
SMALL LEADER BAR 3PK	4.8' (136cm)	LB53-3
LARGE LEADER BAR 3PK	8.9' (272cm)	LB107-3



ALUMINUM CORE

This rigid aluminum core is meant to be used with Savage Infinity Vinyl Backdrops. Simply insert the aluminum tube into the existing corrugated core to increase stability and eliminate sagging. 2.25" Outside diameter / 2" Inner diameter

ALUMINUM CORE 9' (2.75m) **C-09**
ALUMINUM CORE 10' (3.04m) **C-10FT**



DUAL HEAD MICROPHONE

The Savage Dual Head Microphone allows you to record two subjects with only one microphone. Works with GoPro, cell phones, DSLRs and other video cameras for maximum flexibility. The extra long cord allow the subjects to be separated by as much as 24'! Low profile design allows the subject to be heard without the microphone being visually distracting.

DUAL HEAD MICROPHONE MIC-DL



INCLUDES CHARGER

2-PACK LITHIUM ION BATTERIES

Batteries for Savage LED204, LED-ELSM, LED-ELLG, RGB-VL, LED-RLPS, RGB-RL, LW-RGB Lithium Ion, 7.2 Volts, Fully decoded, Dual voltage

2PK 4400MAH - 31.6 WATT HRS REPLACES SONY NP-F750/770, NP-F550 **BNP-F750**
2PK 6600MAH - 31.6 WATT HRS REPLACES SONY NP-F750/770, NP-F550, NP-F970 **BNP-F970**

SAVAGE POWER V-MOUNT LITHIUM ION BATTERY

Savage Power high powered Lithium Ion battery For LED video lights, cameras, monitors & accessories up to 160W.



FEATURES:

- Travel charger included
- V-Mount rechargeable battery
- Memory free
- Built in intelligent control circuit
- LED Power level indicator
- 14.8V 12800mAh 190Wh
- Continuous power: 160W
- Continuous current: 14A

DEVICE RUN TIME EXAMPLES:

- 100W LED Video Light: 2 Hours
- Macbook Pro: 6 Hours
- 17" PC Laptop: 2 Hours

SAVAGE POWER LITHIUM ION BATTERY BNP-BP190V

SAVAGE POWER V-MOUNT VOLTAGE CONVERTER

Converts any V-mount battery to 120V to power anything up to 110W. For use with any 120 volt appliance up to 12 amp draw.

FEATURES:

- Plug and play design
- Snap in the battery
- Plug in the device
- Turn on the power

SAVAGE POWER VOLTAGE INVERTER BNP-PI-110
GOLD MOUNT INVERTER BNP-PI-GM



PRODUCT PHOTOGRAPHY



PRODUCT PRO LED LIGHT TABLE

The Savage Product Pro LED Light Table is every commercial photographer's solution to capturing professional quality product photography without the hassle of compiling an array of complicated lighting and background gear for small subjects. Simply flip a switch and the powerful LED light strips under the table brightly illuminate evenly across the table, creating an instant high-key background. Each rechargeable LED light contains 36 LED chips with a CRI of 91, and are mounted on heavy-duty flexible arms, providing quality backlight, highlights, and under lighting where needed.

INCLUDES:

- (1) LED light table (CRI 91)
- (1) Accessory tray
- (4) Rechargeable 36 bulb LED lights
- (4) AC power cords for charging lights
- (4) Diffuser socks
- (4) 20" Flexible arms
- (1) Nylon protective sleeve



TAKE PERFECT PRODUCT PHOTOS

PRODUCT PRO LED LIGHT TABLE	15" x 15"	(38.1cm x 38.1cm)	LED-PT15
PRODUCT PRO LED LIGHT TABLE	22" x 22"	(55.8cm x 55.8cm)	LED-PT22-N

PRODUCT PHOTOGRAPHY EFFECTS KIT

For use with Savage Product Pro Light Table (not included). Expand the versatility of the Savage Product Pro LED Light Table with additional background options, reflective mylar and acrylic ice cubes.



FEATURES:

- Multiple background material options
- Reflective mylar for creative reflections
- Background stand extends from width: 16.5" - 30.5" / height: 19" - 33"
- Accommodates small & large light table
- Get creative and backlight or under light objects by cutting included material

SMALL KIT (FOR 15"X 15" TABLE) INCLUDES:

- (1) Tabletop background stand
- (12) Acrylic ice cubes
- (2) 16" x 40" Translum™ Background (heavyweight)
- (2) 16" x 40" Translum™ Background (lightweight)
- (4) 16" x 40" Black Velveteen Background
- (4) 16" x 16" Silver Mylar film
- (1) Padded carry bag

LARGE KIT (FOR 22"X 22" TABLE) INCLUDES:

- (1) Table Top Background Stand
- (12) Acrylic Ice Cubes
- (2) 23" x 40" Translum™ background (heavyweight)
- (2) 23" x 40" Translum™ background (lightweight)
- (4) 23" x 40" Black Velveteen Background
- (4) 23" x 23" Silver Mylar film
- (1) Padded carry bag

SMALL KIT EFF-PT15

LARGE KIT EFF-PT22



ROYAL MARBLE PAPER

Marbled effect, random, non-repeating design in soft colors. Rolls are corewound in a 78" x 36" (2m x 11m) size and ideal for tabletop and portrait photography.

RED RM 0778

BLUE RM 5878



MIDNIGHT BLACK VELVETEEN

Savage Midnight Black Velveteen is a non-reflective velvet-like tabletop background material with a paper backing. Wound on a sturdy core.

52" X 20' BLACK VELVETEEN ROLL

522020

STORAGE SOLUTIONS

NEW



SEAMLESS PAPER PRO STORAGE RACK

A professional and durable storage rack designed for paper and other backdrop rolls that is ideal for studios where presentation is key, even in storage areas. A minimalistic arm pulls out and locks back with a magnetic latch to secure each backdrop roll in place against your wall. Made from all aluminum construction and must be securely anchored to the wall using the included set of screws.

FEATURES:

- Aluminum construction
- Holds up to 6 rolls
- 4" (10cm) Holder diameter
- Fits up to 107" x 12yd (2.72m x 11m) backdrop rolls
- Measures 28.5" wide x 21" tall (72cm x 53cm)

SEAMLESS PAPER PRO STORAGE RACK D-BH



SEAMLESS PAPER STORAGE CLIP

Hard-working photo backdrops need a place to call home when not in use. Our Seamless Paper Storage Clip provides an easy-to-use solution that protects rolls from wear and tear and keeps them organized too. Flexible polyurethane is sturdy and allows for easy insertion and removal. Each set of two seamless paper holders stores up to 12 rolls. Multiple sets can be mounted side by side for quick color inventory.

FEATURES:

- Flexible yet durable polyurethane organizes and protects
- Two to a set
- Multiple sets can be mounted side by side along any suitable wall space
- Mounts to wall with durable, long-lasting adhesive strips
- Holds up to 107"x12yd rolls
- 33" x 6" x 3" (84cm x 15cm x 8cm)

SEAMLESS PAPER STORAGE CLIP D-TPC12



SEAMLESS STORAGE RACK / FLOOR DISPLAY

Holds twelve 53" Rolls (sold separately).
15"w x 36"h x 12"d (38.1cm x 91.4cm x 30.5cm)

D-125312



TRANSLUM FLOOR DISPLAY

Holds twelve Translume rolls (sold separately).
15"w x 36"h x 12"d (38.1cm x 91.4cm x 30.5cm)

D-125312T



PRINTED FLOOR DISPLAY

Holds twelve 53" Printed Paper rolls (sold separately).
15"w x 36"h x 12"d (38.1cm x 91.4cm x 30.5cm)

D-125312PB

MAT & MOUNT BOARD

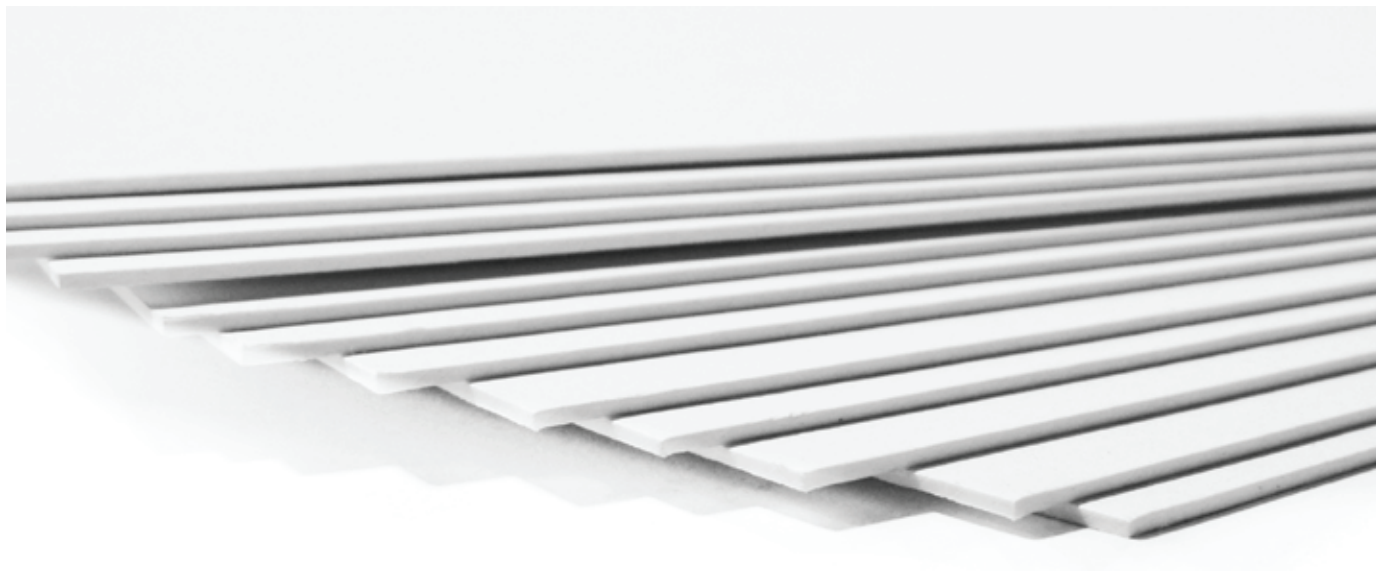


PRESENTATION MOUNT BOARDS

TRUBLACK PRESENTATION BOARD

A neutral deep board that is significantly blacker than standard presentation board. With a solid black core and black facing on both sides, our TruBlack Black Presentation Mount Board surrounds images with the deepest, richest black available. Ideal for surface mounting prints and artwork. Tape and adhesives work well with this board. Thickness: 1/16" / 40pt. / 4ply

11" x 14" (10sht/pk)	100 / CTN.	414002
15" x 20" (10sht/pk)	100 / CTN.	414003
16" x 20" (10sht/pk)	100 / CTN.	414004
20" x 30"	25 / CTN.	414007
32" x 40"	25 / CTN.	414008



TRUWHITE PRESENTATION BOARDS

TruWhite is white core board lined on both sides with super white paper, ideal mounting board for photos and finished artwork. The bright TruWhite surface provides a maximum contrast making it easy to adapt to several medias along with graphic layouts. Tape and adhesives work well with this board. Thickness: 1/16" / 40pt. / 4ply

11" x 14" (10sht/pk)	100 / CTN.	18012
15" x 20" (10sht/pk)	100 / CTN.	18013
16" x 20" (10sht/pk)	100 / CTN.	18014
20" x 30"	25 / CTN.	18015
32" x 40"	25 / CTN.	18017

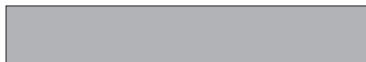
CUT SIZE MAT BOARD

Savage Cut-Size Mat Board is available in sizes 8x10, 11x14 and 16x20 in packages of ten. Sizes 20x24, 30x40 and 32x40 available in bulk pack cartons. Made from the finest pulp and acid free papers. Thickness: 1/16" / 50pt. / 4ply



WHITE SMOOTH CUT SIZE MAT BOARD

8" x 10" WHITE SMOOTH	200 / CTN	15011
11" x 14" WHITE SMOOTH	100 / CTN	15012
16" x 20" WHITE SMOOTH	100 / CTN	15014
20" x 24" WHITE SMOOTH	50 / CTN	15015
32" x 40" WHITE SMOOTH	25 / CTN	15017



GRAY SMOOTH CUT SIZE MAT BOARD

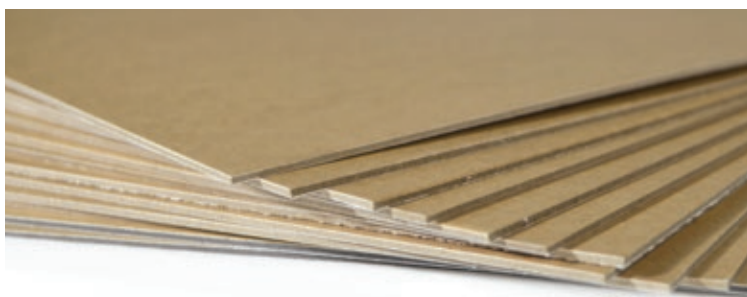
8" x 10" GRAY SMOOTH	200 / CTN	15351
11" x 14" GRAY SMOOTH	100 / CTN	15352
16" x 20" GRAY SMOOTH	100 / CTN	15354
20" x 24" GRAY SMOOTH	50 / CTN	15355
32" x 40" GRAY SMOOTH	25 / CTN	15357



BLACK SMOOTH CUT SIZE MAT BOARD

8" x 10" BLACK SMOOTH	200 / CTN	15401
11" x 14" BLACK SMOOTH	100 / CTN	15402
16" x 20" BLACK SMOOTH	100 / CTN	15404
20" x 24" BLACK SMOOTH	50 / CTN	15405
32" x 40" BLACK SMOOTH	25 / CTN	15407

PRESTAX® NEWS CENTER MOUNT BOARDS



A superior, pH neutral, pressure sensitive mounting board that is simple, fast and economical to use. It requires no tissue, no heat, and no special equipment. It is a must for people in the photographic, fine art or commercial art fields. Prestax® by Savage is perfect for mounting prints, photos, watercolors, etc. Available in three thicknesses.

PRESTAX® PRESSURE SENSITIVE LT.WT. (1/32" / 30PT)

8" x 10"	300 / CTN	30032
11" x 14"	150 / CTN	30034

PRESTAX® PRESSURE SENSITIVE MED.WT. (1/16" / 50PT)

8" x 10"	200 / CTN	30050
11" x 14"	100 / CTN	30052
16" x 20"	100 / CTN	30054

PRESTAX® PRESSURE SENSITIVE HVY.WT. (1/8" / 90PT)

8" x 10"	100 / CTN	30090
11" x 14"	50 / CTN	30092
16" x 20"	50 / CTN	30094
20" x 24"	25 / CTN	30096
20" x 30"	24 / CTN	30097
30" x 40"	12 / CTN	30098
32" x 40"	12 / CTN	30099



SAVAGE UNIVERSAL CORPORATION 2050 S. STEARMAN DRIVE CHANDLER, AZ 85286. WWW.SAVAGEUNIVERSAL.COM